

# COMMUNITY FACILITIES - WINKFIELD NEIGHBOURHOOD PLAN



20<sup>th</sup> February  
2018

The report documents evidence relating to Community Facilities within Winkfield Parish, existing and future requirements, which will contribute to policies within the Winkfield Neighbourhood Plan.

# COMMUNITY FACILITIES - Winkfield Neighbourhood Plan

## TABLE OF CONTENTS

	Page
<b>Section 1 Introduction</b>	p 3
Section 1.1 Aims and Objectives	p 4
Section 1.2 Demographic Profiles of Winkfield and Cranbourne	p 4
 <b>Section 2 Evidence Base</b>	 p 5
Section 2.1 Types of evidence to be used	p 5
Section 2.2 Evidence Log	p 6, 7, 8
 Section 2.3 Planning policies relevant to community facilities	 p 9
Subsection 2.3.1 NPPF 2012	p 9, 10
Subsection 2.3.2 BFC Core Strategy Development Plan	p 10,11
Subsection 2.3.3 Bracknell Forest Local Plan 2002 saved policies	p 11
 Section 2.4 Register of existing community facilities	 p 12, 13, 14
Subsection 2.4.1 Chart of facilities by community	p 15
Subsection 2.4.2 Chart of type of facilities in Winkfield Parish	p 16
 <b>Section 3 Review of Existing Facilities</b>	 p 17
Section 3.1 Community centres and halls	p 17,18,19,20
Section 3.2 Libraries	p 21,22,23,24,25
Section 3.3 Recreational outdoor spaces	p 26,27,28,29,30
Section 3.4 Play areas	p 31,32,33,34
Section 3.5 Youth provision	p 35, 36, 37
Section 3.6 Meeting places	p 38, 39, 40,41,42,43
Section 3.7 Key commercial facilities	p 44, 45,46,47,48
 <b>Section 4 Appendices</b>	 p 49
Appendix A Community hall users and activities	p 50,51,52,53
Appendix B Community centres 1 & 2 mile radius	p 54, 55
Appendix C Ascot Heath library opening times and radius maps	p 56, 57, 58
Appendix D Maps of sport facilities provision	p 59, 60

Appendix D1	Outdoor recreation spaces area measurements	p 61
Appendix E	Maps of play area provision	p 62,63,64,65
Appendix F	Maps of BFC youth centre provision	p 66, 67
Appendix G	Key commercial facilities distance from settlements	p 68, 69

# 1. Introduction

## Sustainable development

*National Planning Policy Framework*

**Sustainable** means ensuring that better lives for ourselves don't mean worse lives for future generations.

**Development** means growth. We must accommodate the new ways by which we will earn our living in a competitive world. We must house a rising population, which is living longer and wants to make new choices. We must respond to the changes that new technologies offer us. Our lives, and the places in which we live them, can be better, but they will certainly be worse if things stagnate.

Sustainable communities are places where people want to live and work, now and in the future. They meet the diverse needs of existing and future residents, are sensitive to their environment, and contribute to a high quality of life. They are safe and inclusive, well planned, built and run, and offer equality of opportunity and good services for all.

An integral part of such communities are the provision of a good range of affordable public, community, voluntary and private sector services which are accessible to the whole community.

Health and Education have not been included for detailed review within the parameters of this report (other than inclusion on the register of facilities) since the provision of such key facilities is planned for and delivered by other agencies over which the Neighbourhood Plan would have limited influence.

The overriding aim of the Community Facilities Topic Group is to ensure that the Winkfield Neighbourhood Plan ultimately contains robust community facility planning policies, written by local residents, directed by their knowledge and passion for the area in which they live, to ensure as far as possible the right sustainable community facilities in the right place.

## 1.1 Aims and Objectives

### Objective 1.

Ensure the whole range of Winkfield parishioners are suitably provided for in terms of Community facilities. To include, but not exclusively, sports and play areas, meeting places, local shops, pubs and restaurants.

### Objective 2

To ensure that policies regarding Community Facilities adhere to the principles of sustainability.

### Objective 3

Identify existing valued Community Facilities that justify protection from unnecessary loss (NPPF paragraph 70)

### Objective 4

Identify any facilities that may have the potential / need to expand in order to serve the community better.

### Objective 5

Identify if there are any initiatives / projects that fall outside the Neighbourhood Plan policies, that the local community may wish to develop by working in the future with the Borough , Parish Council and / or other appropriate parties.

## 1.2 Demographic Profile of Winkfield and Cranbourne

The following information is drawn from the 2011 Bracknell Forest Census and provides details of the Parish population at that point. It provides useful background as to the needs and requirements of the residents of Winkfield and Cranbourne.

The Parish has the following characteristics as compared to other wards within Bracknell Forest:

- one of the lowest numbers of population in the 0-17 age group and one of the highest numbers in the 65+ group
- the highest proportion of owner occupied homes
- the highest proportion of people who provide unpaid care with just below 11%
- the highest proportion of people with a limiting long term illness or disability
- 4-5% of the population classify themselves as bad or very bad health (this is in the top band)
- the household size is similar in all wards ranging from 2.2 to 2.7 – Winkfield and Cranbourne being the lowest with 2.2
- the lowest number of economically active unemployed residents

## 2. Evidence Base

### 2.1 Types of Evidence used

Evidence contained within the report is both quantitative (facts and figures) as well as qualitative (e.g. opinions given in consultation responses). There is also reference to National and Local Policies as well as reports from other specialist organisations e.g. Play England

An Evidence Log documents the sources of evidence gathered in support of the Community Facilities Topic Report

## 2.2 Evidence Log

Title	Comments	Links
Winkfield Steering Group Visioning Paper V5 May 2016		<a href="http://www.winkfieldnp.org/docs/downloads/Vision_Paper_PDF_FINAL_160505.pdf">http://www.winkfieldnp.org/docs/downloads/Vision_Paper_PDF_FINAL_160505.pdf</a>
BFC Infrastructure Delivery Plan post submission 2012		<a href="http://www.bracknell-forest.gov.uk/sal105-infrastructure-delivery-plan-post-submission-sadpd.pdf">http://www.bracknell-forest.gov.uk/sal105-infrastructure-delivery-plan-post-submission-sadpd.pdf</a>
National Planning Policy Framework 2012	Section 8 , Paragraphs 69 ,70 , 73, 74	<a href="https://www.gov.uk/government/uploads/system/uploads/attachment_data/file/6077/2116950.pdf">https://www.gov.uk/government/uploads/system/uploads/attachment_data/file/6077/2116950.pdf</a>
Bracknell Forest Census 2011 – The changing face of Bracknell Forest key facts from the census	Documents at BFC level and ward level	<a href="http://www.bracknell-forest.gov.uk/the-changing-face-of-bracknell-forest-key-census-facts-2001-to-2011.pdf">http://www.bracknell-forest.gov.uk/the-changing-face-of-bracknell-forest-key-census-facts-2001-to-2011.pdf</a> <a href="http://www.bracknell-forest.gov.uk/the-changing-face-of-bracknell-forest-key-census-facts-2001-to-2011-ward-level.pdf">http://www.bracknell-forest.gov.uk/the-changing-face-of-bracknell-forest-key-census-facts-2001-to-2011-ward-level.pdf</a>
BFC Core Strategy Development Plan 2008	A new Comprehensive Local Plan is currently under review and when adopted will supersede much of the 2002 Local Plan and Core Strategy Development Plan 2008 but is as yet not adopted	<a href="http://www.bracknell-forest.gov.uk/core-strategy-development-plan-document-february-2008.pdf">http://www.bracknell-forest.gov.uk/core-strategy-development-plan-document-february-2008.pdf</a>
BFC Planning Obligations Sustainability Appraisal January 2015		<a href="http://www.bracknell-forest.gov.uk/planning-obligations-spd-sustainability-appraisal.pdf">http://www.bracknell-forest.gov.uk/planning-obligations-spd-sustainability-appraisal.pdf</a>
Winkfield Parish 3 year Plan 2017-20		<a href="http://www.winkfieldparishcouncil.gov.uk/images/stories/AgendasMinutes/2016-three-year-plan.pdf">http://www.winkfieldparishcouncil.gov.uk/images/stories/AgendasMinutes/2016-three-year-plan.pdf</a>
BFC Planning Obligations SPD February 2015	See in particular Section 5.5 Community Facilities	<a href="http://www.bracknell-forest.gov.uk/planning-obligations-supplementary-planning-document.pdf">http://www.bracknell-forest.gov.uk/planning-obligations-supplementary-planning-document.pdf</a>

Title	Comments	Links
Bracknell Forest Local Plan 2002	A new Comprehensive Local Plan is currently under review and when adopted will supersede much of the 2002 Local Plan and Core Strategy Development Plan 2008 but is as yet not adopted	<a href="http://www.bracknell-forest.gov.uk/bracknell-forest-borough-local-plan.pdf">http://www.bracknell-forest.gov.uk/bracknell-forest-borough-local-plan.pdf</a> <a href="http://www.bracknell-forest.gov.uk/bfblp-saved-policies.pdf">http://www.bracknell-forest.gov.uk/bfblp-saved-policies.pdf</a>
Bracknell Forest Health and Wellbeing Strategy 2016-2020	See in particular: Promoting Active and Healthy Lifestyle p10 Preventing People Becoming Socially Isolated & Lonely p14	<a href="http://www.bracknell-forest.gov.uk/seamless-health-2016-2020.pdf">http://www.bracknell-forest.gov.uk/seamless-health-2016-2020.pdf</a>
Bracknell Forest Council Plan 2015-2019	See in particular: Value for Money People Live Active & Healthy Lifestyles	<a href="http://www.bracknell-forest.gov.uk/council-plan-2015-to-2019.pdf">http://www.bracknell-forest.gov.uk/council-plan-2015-to-2019.pdf</a>
Play England	Tool for evaluation local play space	<a href="http://www.playengland.org.uk/media/202750/tools-for-evaluating-play-provision.pdf">http://www.playengland.org.uk/media/202750/tools-for-evaluating-play-provision.pdf</a> <a href="http://www.playengland.org.uk/about-us/why-play-is-important/">http://www.playengland.org.uk/about-us/why-play-is-important/</a>
Fields in Trust	Guidance for outdoor Sport and Play	<a href="http://www.fieldsintrust.org/Upload/file/PAD/FINAL%20ONLINE%20Planning%20Guidance%20for%20Outdoor%20Sport%20and%20Play%20Provision%20Oct%202015.pdf">http://www.fieldsintrust.org/Upload/file/PAD/FINAL%20ONLINE%20Planning%20Guidance%20for%20Outdoor%20Sport%20and%20Play%20Provision%20Oct%202015.pdf</a>
The Young Foundation – The Bench Project	The report finds that benches in our towns play a crucial role in social life as a meeting place	<a href="http://youngfoundation.org/publications/benches-everyone-solitude-public-sociability-free/">http://youngfoundation.org/publications/benches-everyone-solitude-public-sociability-free/</a>
BFC Youth Service Modernisation Report (2012)	Report detailing BFC Youth Service review (ongoing)	<a href="http://www.bracknell-forest.gov.uk/youth-service-modernisation-eia.pdf">http://www.bracknell-forest.gov.uk/youth-service-modernisation-eia.pdf</a> <a href="http://democratic.bracknell-forest.gov.uk/documents/s51491/09%20Youth%20Service%20Modernisation%20Programme%20Report.pdf">http://democratic.bracknell-forest.gov.uk/documents/s51491/09%20Youth%20Service%20Modernisation%20Programme%20Report.pdf</a>



Title	Comments	Links
BFC Conservative Election Manifesto 2015	Details manifesto pledges	<a href="http://bracknellconservatives.org.uk/bracknell-forest-council-conservative-election-manifesto-2015/">http://bracknellconservatives.org.uk/bracknell-forest-council-conservative-election-manifesto-2015/</a>
Ascot Matters web site	Link to young people's clubs and groups in the Ascot area	<a href="http://www.ascotmatters.co.uk/local-groups/life-stages/young-peoples-clubs-a-groups">http://www.ascotmatters.co.uk/local-groups/life-stages/young-peoples-clubs-a-groups</a>
Xpresionz (BFC Youth Services website)	Details of youth service provision	<a href="http://www.xpresionz.co.uk/">http://www.xpresionz.co.uk/</a>
Guidelines for Providing Journeys on Foot	Published by the Chartered Institution of Highways and Transportation (2000)	<a href="http://www.ciht.org.uk/download.cfm/docid/D66AD936-281C-4220-BF109289B5D01848">www.ciht.org.uk/download.cfm/docid/D66AD936-281C-4220-BF109289B5D01848</a>
2016 Neighbourhood Development Plan Survey for Winkfield Parish Steering Group	Findings of a survey delivered to each household within Winkfield Parish.	<a href="http://www.xpresionz.co.uk/">http://www.xpresionz.co.uk/</a>
Libraries Review Analyse Phase Summary Report (BFC October 2016)	Report following on from a borough wide library consultation May – July 2016	<a href="http://www.bracknell-forest.gov.uk/libraries-summary-report-october-2016.pdf">http://www.bracknell-forest.gov.uk/libraries-summary-report-october-2016.pdf</a>
Parks and Open Space Strategy (BFC 2012)	Strategy relating to the management and development of recreational green space, particularly in the context of contributing to quality of life	<a href="http://www.bracknell-forest.gov.uk/parks-and-open-spaces-strategy.pdf">http://www.bracknell-forest.gov.uk/parks-and-open-spaces-strategy.pdf</a>
Bracknell Forest Comprehensive Plan – Issues & Options Document (June 2016)		<a href="http://consult.bracknell-forest.gov.uk/portal/planning/clp_issues_options">http://consult.bracknell-forest.gov.uk/portal/planning/clp_issues_options</a>

## 2.3 Planning policies relevant to community facilities

### 2.3.1 National Planning Policy Framework 2012

#### Paragraph 69

*The planning system can play an important role in facilitating social interaction and creating healthy, inclusive communities. Local planning authorities should create a shared vision with communities of the residential environment and facilities they wish to see. To support this, local planning authorities should aim to involve all sections of the community in the development of Local Plans and in planning decisions, and should facilitate neighbourhood planning. Planning policies and decisions, in turn, should aim to achieve places which promote:*

- *opportunities for meetings between members of the community who might not otherwise come into contact with each other, including through mixed-use developments, strong neighbourhood centres and active street frontages which bring together those who work, live and play in the vicinity;*
- *safe and accessible environments where crime and disorder, and the fear of crime, do not undermine quality of life or community cohesion; and*
- *safe and accessible developments, containing clear and legible pedestrian routes, and high quality public space, which encourage the active and continual use of public areas.*

#### Paragraph 70

*To deliver the social, recreational and cultural facilities and services the community needs, planning policies and decisions should:*

- *plan positively for the provision and use of shared space, community facilities (such as local shops, meeting places, sports venues, cultural buildings, public houses and places of worship) and other local services to enhance the sustainability of communities and residential environments;*
- *guard against the unnecessary loss of valued facilities and services, particularly where this would reduce the community's ability to meet its day-to-day needs;*
- *ensure that established shops, facilities and services are able to develop and modernise in a way that is sustainable, and retained for the benefit of the community; and*
- *ensure an integrated approach to considering the location of housing, economic uses and community facilities and services.*

#### Paragraph 73

*Access to high quality open spaces and opportunities for sport and recreation can make an important contribution to the health and well-being of communities. Planning policies should be based on robust and up-to-date assessments of the needs for open space, sports and recreation facilities and opportunities for new provision. The assessments should identify specific needs and quantitative or qualitative deficits or surpluses of open space, sports and recreational facilities in the local area. Information gained from the assessments should be used to determine what open space, sports and recreational provision is required*

#### Paragraph 74 (NPPF 2012)

Existing open space, sports and recreational buildings and land, including playing fields, should not be built on unless:

- an assessment has been undertaken which has clearly shown the open space, buildings or land to be surplus to requirements; or
- the loss resulting from the proposed development would be replaced by equivalent or better provision in terms of quantity and quality in a suitable location; or
- the development is for alternative sports and recreational provision, the needs for which clearly outweigh the loss.

#### Paragraph 81

Once Green Belts have been defined, local planning authorities should plan positively to enhance the beneficial use of the Green Belt, such as looking for opportunities to provide access; to provide opportunities for outdoor sport and recreation: to retain and enhance landscapes, visual amenity and biodiversity; r to improve damaged and derelict land

## 2.3.2 Bracknell Forest Core Strategy Development Plan 2008

### Policy CS1 Sustainable Development Principles

55 Development will be permitted which;

- i. makes efficient use of land, buildings and infrastructure; and
- ii. is located so as to reduce the need to travel; and
- iii. promotes a mix of uses; and
- iv. conserves the use of resources including water and energy through a reduction in their use; and
- v. supports the economic wellbeing of the population; and

Protects and enhances:

- vi. the health, education and safety of the local population; and
- vii. the quality of natural resources including water, air, land and biodiversity; and
- viii. the character and quality of local landscapes and the wider countryside; and
- ix. the historic and cultural features of acknowledged importance.

### Policy CS6 - Limiting the Impact of Development

85 1. Development alone or in-combination with other proposals, will contribute to the delivery of infrastructure needed to support growth in the Borough and will mitigate adverse impacts on communities, transport and the environment.

86 2. Where those occupying development would lead to increased pressure on local infrastructure, community facilities or resources, that impact is to be met by:

- (i) on-site provision prior to full occupation and maintained for the life of the development;
- or, in agreement with the Council:

- (ii) contributing to additional or expanded provision on a different site; or
- (iii) a mix of on-and off-site provision, of infrastructure & facilities, reasonably related and needed to serve the development and which will make it more sustainable.

*The additional provision to be sufficient and in proportion to the scale and nature of the proposed development.*

*87 3. Where the Council agrees off-site mitigation is more practical and of greater value in creating sustainable communities, contributions towards provision on a different site will be secured by planning obligations.*

### 2.3.3 Bracknell Forest Local Plan 2002 saved policies

#### Policy SC3 -No reduction in existing community facilities

8.25

*Development will only be acceptable where there is no net reduction of existing community facilities.*

8.26

*Any reduction in the existing range of facilities would result in an inadequate provision of social infrastructure and place increased demands on remaining facilities.*

8.27

*This policy allows for the replacement of existing facilities, subject to the provisions of Policies SC1 and SC2.*

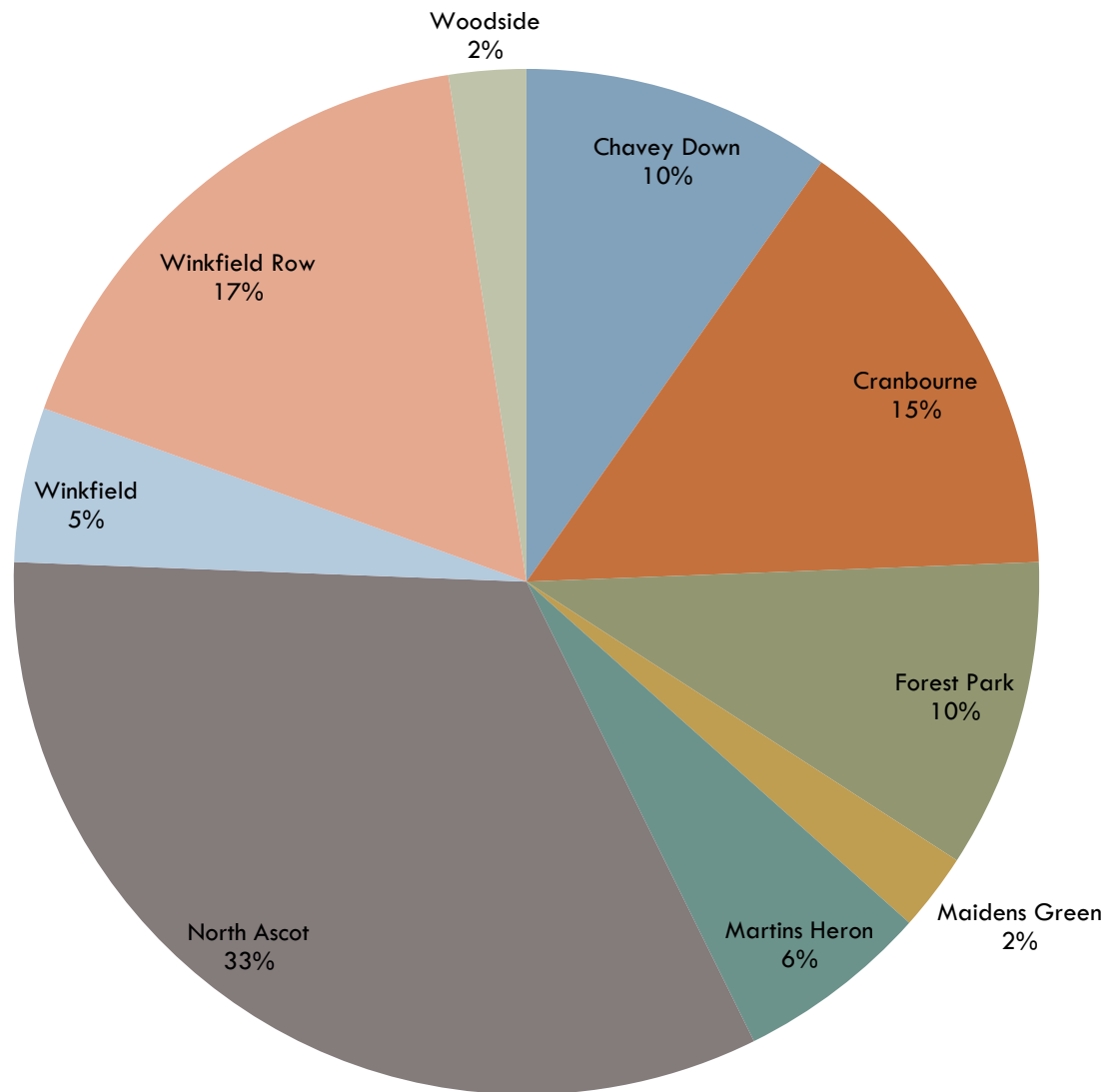
## 2.4 Register of existing community facilities (all located within Winkfield Parish)

Classification of Community Facility	Existing provision	Post code	Settlement/ Community
Places of Worship	St Martin's (Anglican)	SL5 8RR	Chavey Down
Nursing Home	Ascot Residential Home, St David's Nursing Home, The Priory	SL5 8RS	Chavey Down
Play Facilities (Outdoor playgrounds)	Longhill Skate Park	SL5 8RQ	Chavey Down
Play Facilities (Outdoor playgrounds)	Longhill Park	SL5 8RQ	Chavey Down
Public Houses & Restaurants	Royal Foresters Hotel and Restaurant (closed at present)	SL5 8DR	Chavey Down
Community Centres / Halls	St Martins Church Hall	SL5 8RR	Chavey Down
Places of Worship	Ascot Priory	SL58RT	Chavey Down
Schools	Heathfield Senior - Ind	SL5 8BQ	Chavey Down
Places of Worship	St Peter's (Anglican)	SL4 2EG	Cranbourne
Community Centres / Halls	St Peter's Church Hall	SL4 2EG	Cranbourne
Community Centres / Halls	British Legion Hall - currently non operational	SL42EE	Cranbourne
Play Facilities (Outdoor playgrounds)	Asher	SL4 2EU	Cranbourne
Schools	Cranbourne Primary	SL4 2EU	Cranbourne
Schools	Montessori Pre School - St Peters hall Cranbourne	SL4 2EG	Cranbourne
Public Houses & Restaurants	The Old Hatchet Pub / Restaurant - Hatchet Lane	SL4 2EE	Cranbourne
Public Houses & Restaurants	Kee's Restaurant , Lovel Road	SL4 2ES	Cranbourne
Public Houses & Restaurants	The Squirrels Pub / Restaurant	SL4 4TF	Cranbourne
Public Houses & Restaurants	The Hernes Oak Pub	SL4 4SY	Cranbourne
Shops	Cranbourne Stores (small general shop)	SL4 4TP	Cranbourne
Schools	Ascot & Cranbourne Pre School - Cranbourne Primary	SL4 2EU	Cranbourne
Places of Worship	Bracknell Islamic Cultural Society	RG120XQ	Forest Park
Health and Social Care	Age Concern Day Centre	RG12 0XH	Forest Park
Community Centres / Halls	Community Centre	RG12 0XQ	Forest Park
Play Facilities (Outdoor playgrounds)	Savernake	RG12 0UX	Forest Park
Shops	Small shopping parade (2 shops)	RG12 0XQ	Forest Park
Play Facilities (Outdoor playgrounds)	World's End , Pyegrove Chase	RG12 0WE	Forest Park
Nurseries / Early Years / Pre School	Teddies Nursery Forest Park CC	RG12 0XQ	Forest Park

Public Houses & Restaurants	The Winning Post restaurant	SL4 4SW	Maidens Green
Public Houses & Restaurants	Stirrups Pub/ Restaurant / Hotel	RG42 6LD	Maidens Green
Public Houses & Restaurants	Cinnamon Tree	SL4 4SJ	Maidens Green
Play Facilities (Outdoor playgrounds)	Bog Lane	RG12 9YL	Martins Heron
Play Facilities (Outdoor playgrounds)	Allsmoor	RG12 9FD	Martins Heron
Nurseries / Early Years / Pre School	Plus 3 Nursery, Martins Heron Community Hall	RG12 9TZ	Martins Heron
Shops	Tesco - main supermarket	RG12 9TZ	Martin's Heron
Community Centres / Halls	Community Centre	RG12 9TZ	Martin's Heron
Leisure & Sports Facilities	Jubilee Ground playing fields and pavilion (Goaters Road)	SL5 8HZ	North Ascot
Leisure & Sports Facilities	Lavender Golf Course	SL5 8BD	North Ascot
Places of Worship	North Ascot Baptist (Ascot Life Church)	SL58PX	North Ascot
Places of Worship	Chapel of St Mary & John (King Edwards Road)	SL5 8PD	North Ascot
Community Centres / Halls	Community Centre	SL5 8LA	North Ascot
Community Centres / Halls	King Edwards Hall	SL5 8PD	North Ascot
Community Centres / Halls	Jubilee Pavilion (Goaters Road)	SL5 8JA	North Ascot
Community Centres / Halls	Trax Building	SL5 8JW	North Ascot
Play Facilities (Outdoor playgrounds)	Jubilee Recreation Ground (Goaters Road)	SL5 8JA	North Ascot
Play Facilities (Outdoor playgrounds)	Fernbank Play Space	SL5 8DP	North Ascot
Play Facilities (Outdoor playgrounds)	Blackmoor Play Space	SL5 8NN	North Ascot
Library Services	Ascot Heath Library - open daily ex Wed / Sun	SL5 8LA	North Ascot
Schools	Ascot Heath - Infant and Junior Schools	SL5 8PN	North Ascot
Schools	LVS - Prep & Senior - Ind	SL5 8DR	North Ascot
Nurseries / Early Years / Pre School	ABC Pre School Baptist Church North Ascot	SL58PX	North Ascot
Nurseries / Early Years / Pre School	Ascot Day Nursery , Fernbank Road	SL5 8LA	North Ascot
Parish Office	Fernbank Road , North Ascot	SL5 8JW	North Ascot
Health and Social Care	David Pharmacy - New Road	SL5 8QQ	North Ascot
Shops	Small shopping parade - Warren Row (4 shops)	SL5 8HN	North Ascot
Shops	Small shopping parade - Royal Hunt - Fernbank Road (3 shops)	SL5 8JR	North Ascot
Shops	Londis - New Road	SL5 8QH	North Ascot
Post Office	Cost Cutter - Royal Hunt Parade - Fernbank Road	SL5 8JR	North Ascot

Post Office	Londis - New Road	SL5 8QH	North Ascot
Public Houses & Restaurants	Mango Indian Restaurant	SL5 8JR	North Ascot
Public Houses & Restaurants	The Royal Hunt - <b>CLOSED</b>	SL5 8PU	North Ascot
Youth Centres / Activities	Karen's Community Café - Ascot Jubilee Ground Pavilion	SL5 8JA	North Ascot
Places of Worship	St Mary's (Anglican)	SL4 4SE	Winkfield
Public Houses & Restaurants	White Hart Pub & Restaurant	SL4 4SE	Winkfield
Community Centres / Halls	St Popel's Hall (St Mary's Church)	SL4 4SG	Winkfield
Nurseries / Early Years / Pre School	Montessori - Popel's Hall	SL4 4SG	Winkfield
Leisure & Sports Facilities	Locks Ride playing fields and pavilion	RG42 7NJ	Winkfield Row
Places of Worship	Methodist	RG42 6NE	Winkfield Row
Places of Worship	Joel's Place , Free	RG42 7PA	Winkfield Row
Community Centres / Halls	Carnation Hall	RG42 7PA	Winkfield Row
Community Centres / Halls	Charlotte Pratt Memorial Hall	RG42 7NY	Winkfield Row
Community Centres / Halls	The Winkfield Club (Social Club )	RG42 6LY	Winkfield Row
Play Facilities (Outdoor playgrounds)	Carnation Hall	RG42 7PA	Winkfield Row
Play Facilities (Outdoor playgrounds)	King George V Recreation Ground	RG42 6LY	Winkfield Row
Play Facilities (Outdoor playgrounds)	Lock's Ride Recreation Ground	RG42 7NJ	Winkfield Row
Schools	Lambrook Prep - Ind	RG42 6LU	Winkfield Row
Health and Social Care	Winkfield Manor Sheltered Accommodation	SL5 8RY	Winkfield Row
Public Houses & Restaurants	Don Beni's Restaurant	RG42 6NH	Winkfield Row
Nurseries / Early Years / Pre School	Chavey Down pre School Carnation Hall	RG42 7PA	Winkfield Row
Schools	Winkfield St Mary's - Primary	RG42 6NH	Winkfield Row
Public Houses & Restaurants	Rose & Crown	SL4 2DP	Woodside
Public Houses & Restaurants	Duke of Edinburgh	SL4 2DP	Woodside

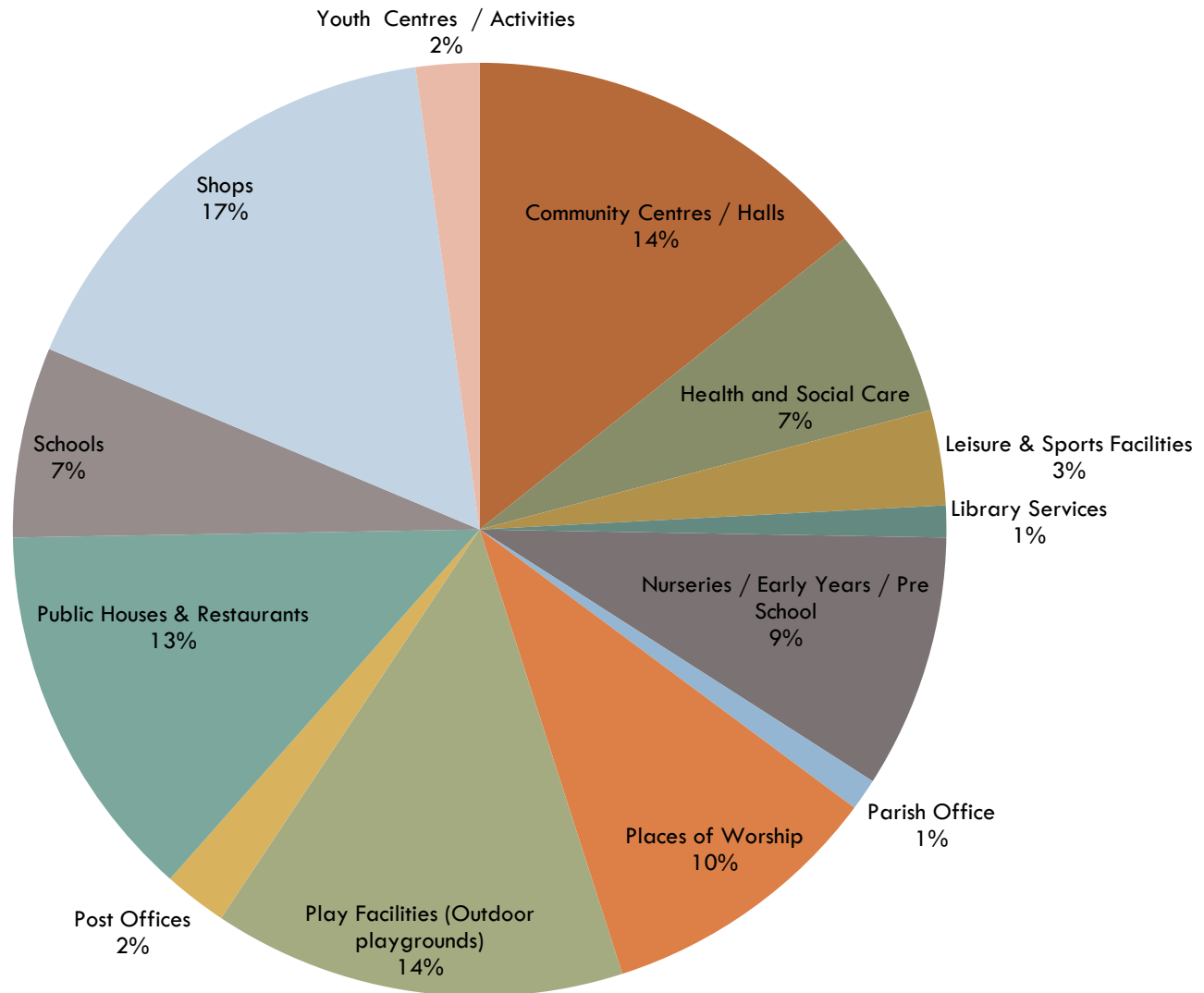
## 2.4.1

**Winkfield Parish - Facilities by Settlement / Community**



## 2.4.2

# Winkfield Parish - Classification of facilities



# 3. Review of existing community facilities

This section will review the provision of key community facilities that are to be included within the parameters of the topic group review. Facilities such as schools and health care provision are not included since they are a significant area already planned for and provision controlled by other parties such as Bracknell Forest Council and the NHS.

## 3.1 Community Centres and Halls



FIGURE 1 CARNATION HALL, WINKFIELD ROW

There are **6** BFC defined community centres / halls/pavilions within Winkfield Parish: North Ascot (2) , Forest Park , Martin's Heron & The Warren and Winkfield Row (2). (**Infrastructure Delivery Plan p80**) There are also 5 church halls, 1 social club and 2 facilities which are believed to be currently little used (TRAX building, North Ascot BFC owned and British Legion, Cranbourne privately owned). The community centres are **well utilised** by the community for a wide range of activities (Appendix A details activities and users)

Church halls provide a valuable supplemental role.

The pavilions (Jubilee & Locks Ride) provide a necessary facility for sports users although there are



FIGURE 2 LOCKS RIDE PAVILION

limitations in their current form which limit the extent to which they are used by other non-sport users. The Locks Ride pavilion is little used other than for sport and the Jubilee pavilion is also used by a local community group and after school club. Toilet / changing facilities are outdated in both and size is a limiting factor. It should also be noted that current parking availability at the Jubilee is limited.

The BFC Infrastructure Delivery Plan 2012 (6.6 p81) informs that **no further community centres are planned within Winkfield.**



FIGURE 3 FOREST PARK COMMUNITY CENTRE

Currently, there is a **ratio** of community centres / halls / pavilions to population of **1:2500** (i.e. 6 facilities and population approx. 15000)

Bracknell Forest as a whole – population at last **census** 113205 – 26 Community Centres - ratio 1:4354

Winkfield Parish is relatively well provided with Community Centres but the further potential for any underused buildings and / or new development on a cost effective sustainable basis should be explored as the demand is likely to be there from the community. The Visioning Paper notes in particular that the Forest Park Community Centre is not large enough to meet current requirements. An observation is that **there is also no**

**outdoor space** in relation to either the Forest Park Community Centre or the Martins Heron and Warren Community Centres.. WPC have also advised that Carnation Hall is **oversubscribed**. Both Forest Park and Martins Heron and the Warren community centres are operating at **near capacity** for regular lets. There is some availability for ad hoc weekend community bookings at Carnation Hall and Forest Park Community Centres however Martins Heron and the Warren have limited scope for this type of booking. It should be noted however, that the **North of the Parish is less well served** under the definition of Community Centre facilities within a 1 mile radius (Cranbourne and Maidens Green) however; most of Winkfield Parish is within a 2 mile radius of a Community Centre / Hall. (Appendix B)

#### Additional Information

**TRAX building (North Ascot)** – owned by Bracknell Forest Council – former youth centre building – decision made in 2013 to let the building.

<http://democratic.bracknell-forest.gov.uk/ieDecisionDetails.aspx?Id=1808>

Currently used by The Ark Trust Ltd for some weekly activity sessions.

**British Legion Hall (Cranbourne)** - privately owned hall not currently in use. Previously used to provide a community facility by The Cranbourne and Winkfield Royal British Legion Club, who have now ceased to trade. The Visioning Paper has identified an aspiration for a community centre within Cranbourne to act as a focal point.

#### Local policies

**BFC Planning Obligations – Supplementary Planning Document (February 2015)** – this document (section 5.5) describes and favours the model of a multifunctional community hub for future new facilities stating these to have economic as well as social integration benefits. The document does also state that for existing facilities, improvements may be more appropriate.

**Bracknell Forest Council Plan 2015-2019** – one of the six strategic themes is “That people to live active and healthy life style”. A key measure of success is “numbers of adults and young people participating in leisure and sport has increased”. Community halls can contribute to the delivery of this objective.

### Consultation Findings

#### 2016 Winkfield Parish Neighbourhood Plan Survey (1413 participants)

- 66% of respondents feel that community hall provision currently meets their needs
- 27% of respondents have no opinion
- 7% of respondents felt that their needs were not met – nearly a quarter of these respondents (approx. 2% of overall participants) stating that there were insufficient halls or that the spaces offered lacked sufficient variety in terms of facilities offered and size
- 34% of respondents use community hall facilities
- The highest satisfaction was found in Winkfield Row , Forest Park and Chavey Down
- The least satisfaction was in Cranbourne (15% respondents) and Kings Ride (13% respondents) - total parish dissatisfaction rate is 7%
- Community Halls are most used by respondents from Winkfield Row (48%) , North Ascot Fernbank Road (37%) and Forest Park (37%).
- Community Halls are least used by respondents in Brockhill (14%) , Kings Ride (16%) and Winkfield (19%)
- Cranbourne - responding residents overall agree that current provision of community halls does meet their needs (40% agree / 15% disagree / no opinion 45%) although the overall parish percentage that agree is 66% so Cranbourne do have a lower satisfaction rate than average.

#### Topic Group observations

- Of those respondents expressing an opinion on the provision of community hall facilities, 90% felt that needs were met and 10% felt that their needs were not met.
- Use and satisfaction with provision is likely to be linked to proximity of facilities to where people live
- The visioning paper identified an aspiration in Cranbourne for a community hall to act as a focal point and it is true that the Cranbourne respondents were least satisfied with the provision however:
  - 73% of Cranbourne residents favour small developments - fewer than 10. This impacts on developer funding that is available for providing new community facilities i.e. less funding is available to provide for facilities such as a community hall. It is however noted in the Winkfield Parish 3 Year Plan (2017-20) that a

midterm aspiration is the viability assessment of the British Legion Hall as a community asset.

- Overall more respondents from Cranbourne stated that they were satisfied (40%) with existing parish provision than not (15%)

### Summary

According to the findings of the Neighbourhood Plan questionnaire, the current community hall provision does meet the needs of the parishioners. However, this is not to say that further improvement is unnecessary. These facilities are valued within communities and as shown by the demand for the hire of such facilities by various groups and small businesses. There is very limited scope for increasing regular weekly lets at the halls. Any investment to increase capacity is likely to benefit local communities.

Community Centres and Halls play a vital role within our community and as such **should be protected from unnecessary loss** (NPPF paragraph 70). Any future development should be **sustainable and maintain or improve the ratio (1:2500) of community centre facilities** for the residents of Winkfield Parish. The **provision of outdoor space** should also be a consideration for any future community hall development.

The viability of the British Legion Hall (Cranbourne) as a community asset should be considered (see Winkfield Parish 3 year Plan 2017-20) as this is currently an unused facility and is located in an area where there is demand for improved provision of a community hall (see Winkfield Parish neighbourhood Plan Consultation Questionnaire - Cranbourne) The viability as a multifunctional community hub would also need to be explored (see BFC Planning Obligations – Supplementary Planning Document (February 2015))

Use of the **pavilions** is limited by inadequate and outdated facilities. **Improvement** / expansion could ensure greater benefit is obtained from these buildings for local communities within Winkfield Parish.

## 3.2 Libraries



FIGURE 4 ASCOT HEATH LIBRARY

There is **one** library located within Winkfield Parish – **Ascot Heath library**. The Friends of Ascot Heath Library have stated that the library acts as a community hub for a wide range of community groups from toddlers to elderly retired people.

The **BFC Infrastructure Delivery Plan 2012** informs:

- There are currently no expansions or new facilities proposed. Improvements to existing facilities will be sought rather than the provision of new facilities. The main Bracknell Town library is currently undergoing improvements to bring it to an acceptable standard for the borough.
- Developers will be required to make financial contributions towards the enhancement of existing libraries. Libraries have been

included in site-specific infrastructure schedules of the BFC Infrastructure Delivery Plan however none of these sites fall within Winkfield Parish.

- The Department for Culture, Media and Sport has produced guidance for library standards, which states that Local Authorities are required to provide a comprehensive, efficient and accessible library service.
  - Firstly, guidance states that each library should be open for at least 5 convenient hours per week - meaning outside of 9am - 5pm Monday to Friday. All libraries in Bracknell Forest meet or exceed this standard.
  - Secondly, the recommended annual opening hours per 1000 population is 128hrs. In Bracknell Forest, this figure is 131.18 hrs.
  - Thirdly, standards recommend that, for Unitary Authorities, 88% of households should be within 1 mile or 100% of households should be within 2 miles of a library (See map appendix C)

### Ascot Heath Current Provision

- Open for 26 hours per week of which 7 hours are deemed convenient
- Annual opening hours are in the region of 1300 hours. If the criteria of 128 hrs per 1000 population were applied to Winkfield Parish residents only then the standard is not met however Bracknell Forest does meet the standard borough wide.
- Distance to a library standards are attained at present however, if Ascot Heath were to close this could mean that the recommended requirements are no longer met. (see map appendix C)
- A group “Friends of Ascot Heath Library” have been formed to promote awareness of the value of the library to local residents and to actively campaign for the library provision to be protected. A petition has been started.



### Bracknell Forest Library Consultation

A review of the borough's nine libraries and its home library service has recently been completed to assess how effectively current services meets community needs taking into account the financial challenges the council faces.

Residents in Bracknell Forest were given the opportunity to participate in a consultation process May - July 2016 during which time four public meetings took place around the borough. Residents were encouraged to attend to share their ideas and thoughts about how the council can deliver a good quality, sustainable library service.

<http://www.bracknell-forest.gov.uk/residentstobeconsultedonthefutureofboroughlibraries.htm?news=1>

### Consultation Findings

#### 1. 2016 Winkfield parish Neighbourhood Plan Survey (1413 participants)

- Library facilities are ranked least important facility however 70% classify it as important

<u>Facility</u>	<u>% 'Important'</u>	<u>% 'Good access'</u>
Pharmacy	96%	78%
Post Office	92%	76%
Recreational green outdoor spaces	91%	83%
General stores / newsagents	89%	83%
Children's equipped play area	80%	76%
Library	70%	60%

- 60% rate access to a library as good
- Considerable satisfaction variation by area with highest satisfaction in North Ascot and lowest Cranbourne
- Overall satisfaction with current provision of library services

#### 2. BFC Libraries Review Analyse Phase Summary Report October 2016

- Section 3.17 – library opening hours are not consistent and should be reviewed to ensure the needs of residents are met
- Section 3.19 – usage of libraries in BFC is low in comparison to similar authorities
- Section 3.20 – recognises the importance of libraries in reducing social isolation

- Section 3.21 – identifies libraries as a potential delivery point for digital inclusion and enablement
- Table 3.2 2015-16 Library visits comparison identifies Ascot Heath Library (within Winkfield Parish) as serving North Ascot ward and Whitegrove Library (within Bracknell Forest) as serving Winkfield and Cranbourne wards.
- Whitegrove library has the 2<sup>nd</sup> longest opening hours and ranked 4<sup>th</sup> in terms of visits per hour
- Ascot Heath library has 6<sup>th</sup> longest opening hours and ranked 8<sup>th</sup> in terms of visits per hour
- Both Whitegrove and Ascot Heath libraries open on a Saturday , which is the most popular day for visiting a library

Library	Total visits	Hours open per week	Visits per open hour	Wards served
Bracknell	63027	42.5	29.6	Bullbrook, Priestwood and Garth, Old Bracknell, Wildridings and Central, Winkfield Harvest Ride
Crowthorne	64406	46	28.0	Crowthorne and Owlsmoor
Whitegrove	52311	45	23.2	Winkfield and Cranbourne
Sandhurst	43004	34.5	24.9	Little Sandhurst and Wellington, Central Sandhurst and College Town
Birch Hill	31582	22	28.7	Hanworth
Binfield	26054	25	20.8	Binfield with Warfield
Ascot Heath	19765	26	15.2	North Ascot
Great Hollands	17010	17	20.1	Great Hollands North and South
Harmans Water	11078	16.5	13.4	Harmans Water and Crown Wood
<b>Total</b>	<b>328237</b>	<b>274.5</b>	<b>22.67</b>	

- Table 3.5 summarises issues for investigation in plan phase:



- Remodelling of library opening hours to meet community needs. Investigate possibility of using technology to extend hours.
- Do the planned new housing developments bring challenges or provide any opportunities for the library service?
- How can libraries work with other services and agencies to reduce silo working and duplication in service delivery and bring potential commissioning opportunities?
- Bracknell Forest's population is growing and, with plans for new housing developments, consideration needs to be given to tailoring future library provision to the new demography of the borough.

- BFC has proposed target savings for library provision of £250K – see table 7.3 Core option efficiency to include self-service technology and technology enabled opening and staff reductions
- Table 7.4 – Additional strategic options – recommends option 2 – Community Focus. Features of this include retaining current network, volunteering and working toward community management.

#### Topic Group observations

- The settlement of Cranbourne is on the outer limits of a 2 mile radius library zone – closest library being Ascot Heath. It is noted that the BFC Libraries Review document table 3.2 states Cranbourne ward as being served by Whitegrove Library
- Both libraries that serve the Winkfield Parish wards have a higher ranking in terms of opening hours than the ranking for visits per hour. This would tend to reflect the findings of the neighbourhood Plan Survey that the existing provision is largely meeting the requirements of the local community.

#### Summary

The Bracknell Forest Council Conservative election manifesto 2015 pledged “**We will remain committed to our library service**”

The Ascot Heath library is valued as a community facility (although not as highly as other facilities) and as such should **protected from unnecessary loss** (NPPF paragraph 70) in order to maintain required library standards and to meet local need. Relevant parties should work together where necessary to maintain the provision as a viable and sustainable community facility.

A final decision on the future of the Bracknell Forest Library provision is still under review by BFC, with options consultation having taken place 24 October 2016 to 16 December 2016. A review of the findings is currently being taken with future possibilities being explored. The value of the library service is acknowledged by BFC and possible areas identified for the future action are:

- Improving visibility of the service to increase public awareness and enable the service to reach a wider audience and maximise its potential
- Opening hours to be reviewed
- Smarter use of buildings – for example shared use and hiring of spaces

Initiatives that promote and ultimately protect access to a sustainable library service for the inhabitants of Winkfield Parish to be supported by the Parish Council via the Neighbourhood Plan for planning issues as appropriate. Other initiatives that are not planning related to be supported by means outside of the Neighbourhood Plan as appropriate e.g promoting the library service in parish newsletter and on website.

### 3.3 Recreational outdoor spaces

National and local planning policies reflect the importance of outdoor recreational spaces.

**National Planning Policy Framework (2012)** paragraphs 73, 74 and 81 in particular make reference to the value of such places. The full detail of these paragraphs is detailed in section 2.3.1 of this report. Key extracts are as follows:



- Access to high quality open spaces and opportunities for sport and recreation can make an **important contribution to the health and well-being of communities**

- Existing open space, sports and recreational buildings and land, including playing fields, **should not be built on** unless.... land to be surplus to requirements ..... be

FIGURE 5 LOCKS RIDE RECREATION GROUND

replaced by equivalent or better provision ... the development is for alternative sports and recreational provision

- Once Green Belts have been defined ... looking for opportunities to provide access; to provide opportunities for outdoor sport and recreation ...

#### **Bracknell Local Development Plan (2012)**

Sports Pitches: (page 126) “.....disparity of sports pitch provision across the Borough according to the national standard of 1.2ha per 1000 residents (National Playing Fields Association 2008).

Assumed areas for facilities are based on:

Football 0.86ha  
Rugby 1.26ha  
Cricket 1.86ha  
Artificial pitches 1.72 ha

The assessment has identified a deficit of 56.55 hectares of sports pitches across the borough. Only 3 wards have provision in excess of the 0.12 ha per 1000 person national standard, whereas 15 wards fall short ....

Opportunities should therefore be sought for new development to increase sports pitch provision in the Borough when contributing to OSPV (Open Space of Public Value)

Policy CS8 (Core Strategy Development Plan) –Recreation and Culture, states that **developments** will be required to:

- retain, improve and maintain existing** Recreational Facilities;  
and/or
- provide and maintain new** Recreational Facilities

## BFC Parks and Open Spaces Strategy (2012)

This document expands upon recommended national standards for outdoor playing space as promoted by Fields in Trust.

Recommendations are as set out within The Six Acre Standard (2001 edition) :

The suggested minimum national standard for outdoor playing space that should be adopted by all local planning authorities is 2.4 hectares (6 acres) per 1000 persons.

Component parts to this are:

Outdoor playing space for sport:

- A minimum standard of 1.6 ha (4 acres) per 1000 people for outdoor sport
- An important element of the above recommendations is a specific allocation of 1.2 ha (3 acres) for pitch sports
- A minimum standard of outdoor space for children's play of 0.8 ha (2 acres) per 1000 people

## Bracknell Forest Health and Wellbeing Strategy 2016-2020

Section on "Promoting active and healthy lifestyle" p10-11 includes the social and health benefits of sport or physical activity

**Bracknell Forest Council Plan 2015-2019** – one of the six strategic themes is "That people to live active and healthy life style" . A key measure of success is "numbers of adults and young people participating in leisure and sport has increased" . Outdoor recreational space can contribute to the delivery of this objective.

## Assessment of provision in Winkfield Parish

Winkfield Parish\_has approx. 15000 residents served by:

*Locks Ride Recreation Ground (Winkfield Row)* – 3.29ha (area of the park) containing– 2 x football pitches, 1 x cricket pitch (although football and cricket cannot be used simultaneously)

*King George V Recreation Ground (Winkfield Row)* – 7 aside football pitch (but no goal posts) – 0.15ha (assumed area of the pitch)

*Asher Recreation Ground (Cranbourne)* –included by BFC in IDP as having a football pitch – assumed min dimensions for 11 a side 45mx90m = 0.40ha . (It is noted that this pitch has not been used for many years.)



In addition Winkfield Parish has 3 x tennis courts at Jubilee Recreation Ground (North Ascot)

BFC Infrastructure Delivery Plan identifies Winkfield and Cranbourne as providing a surplus of 1.26ha in terms of meeting the standard of 0.12ha per 1000

FIGURE 6 JUBILEE RECREATION GROUND

of population. However it is noted that this includes a football pitch at Asher Recreation Ground which has not been functional for many years due to a waterlogging problem.

Total space for outdoor recreation (including green space and equipped play areas) within Winkfield Parish is approximately 18ha. This is based on full site areas but excluding car parks and buildings. Only the skate park and equipped play area of Longhill Park have been included since the rest of the large green space is not suitable to be counted as available as outdoor playing space since this is an area designated local wildlife area and also accessible to dog walkers.

See **Appendix D1** for **maps** of existing sports pitch provision within Bracknell Forest and Winkfield Parish (taken from BFC Infrastructure Delivery Plan 2012)

#### Additional / Improvements Required within Winkfield Parish

- Cranbourne – The desire for a village green to act as a focal point has been identified in the visioning paper - however see below findings and observations from the parish consultation
- . The existing green space at Asher Park has a small play area but there is a problem with waterlogging in the field itself. The solution to this issue could be cost critical and therefore limiting the options for developing this space. Asher Park is also within Green Belt. The residents have been assessing how this space can be improved and best utilised.
- Maidens Green – lack of a central focus has been identified (Visioning Paper ) – provision of a village green is a possible aspiration however see below findings and observations from the parish consultation
- Forest Park – an observation noted in the Neighbourhood Plan visioning paper was for the possible development of sporting facilities at Savernake Park. This is an area that is currently owned by Bracknell Forest Council. Consideration could be given to the benefits and viability of a switch to Winkfield Parish Council ownership.

#### Consultation Findings

##### 2016 Winkfield Parish Neighbourhood Plan Survey (1413 participants)

- Recreational green outdoor spaces are ranked third most important community facility from the options provided

<b>Facility</b>	<b>% 'Important'</b>	<b>% 'Good access'</b>
Pharmacy	96%	78%
Post Office	92%	76%
Recreational green outdoor spaces	91%	83%
General stores / newsagents	89%	83%
Children's equipped play area	80%	76%
Library	70%	60%

- Recreational green outdoor spaces are ranked third most important as a place to meet when grouped together with recreational green outdoor spaces

<b>Where you like to meet other people:</b>	<b>Frequently</b>	<b>Occasionally</b>	<b>Never</b>
Cafes/Coffee Shops	36%	50%	14%
Public House/Restaurant/Hotel	35%	52%	13%
Play/recreation/sporting grounds	29%	40%	31%
Garden Centres	26%	51%	23%
Place of Worship	17%	22%	61%
Library	9%	25%	66%

- 17% of respondents stated that they use sports pitches
- Within the Green Infrastructure section of the questionnaire 97% agree that local green spaces should be retained for healthy recreation
- Both Cranbourne (84%) and Maidens Green (78%) responding residents rate recreational green outdoor space as important This is however below the parish wide overall rating of 91%
- Parish wide good access rating is 83% however Cranbourne (69%) and Maidens Green (50%) score below average.

#### Topic Group Observations

- Recreational green outdoor spaces are valued by the Winkfield Parish residents for the purposes of healthy recreation and also as a place to meet with others.
- Current provision is meeting the needs of most people with 83% of respondents stating that they had good access.

- Cranbourne respondents have shown the greatest desire to improve opportunities to meet people (see section 3.6 of this report) – this could relate to the visioning paper desire to have a village green to act as a focal point
- There are some potential incompatibilities of evidence relating to Cranbourne and Maidens Green :
  - Visioning paper states for Cranbourne and Maidens Green the aspiration for a village green to act as a focal point
  - The consultation found that both these settlements rated recreational green space below average in terms of importance as a community facility
  - The consultation found that both settlements rated existing access to recreational green space below parish average of 83%. Cranbourne 69% rated access as good and Maidens Green 50% rated access as good. It is however noted that the residents did not rate as “important” access to recreational spaces as highly as the general parish

### Summary

New developments within Winkfield Parish should adhere to Bracknell Forest policy CS8 with regard to recreational facilities.

Existing provision within Winkfield Parish should be **protected from unnecessary loss**.

The need for additional facilities should be reviewed and supported if there is evidence for demand and the long term sustainability of such new provisions can be established.

A review of Savernake Park in conjunction with Bracknell Forest Borough Council could be considered by Winkfield Parish Council.

Based on 1.2ha sports pitches per 1000 residents (NPFA, 2008 & BFC Parks and Open Space Strategy 2012), the recommended standard for 15000 residents would be 18ha. It can therefore be concluded that provision within Winkfield Parish does not meet the required standard for pitch sports. Excluding Asher Park (which is not utilised due to waterlogging) then pitches at Locks Ride (3.29ha total park ) and King George V (0.15 seven aside football pitch) provide a total of 3.44ha whereas the standard for a population of 15000 is 18ha

The recommended outdoor playing space is 2.4 ha per 1000 residents (BFC Parks and Open Space Strategy 2012) – provision within Winkfield Parish on this basis should equate to 36ha however the actual figure is in the region of 18ha. It can therefore be concluded that there is a case for further expansion of outdoor playing space particularly if there is development within the parish which results in an increasing population.



## 3.4 Equipped Play Areas

**Appendix E** details maps of provision within Bracknell Forest as a whole and also more specifically, those within Winkfield Parish. There is also a log of the Winkfield Parish facilities detailing location and equipment / facilities provided

Extracts from **Bracknell Local Development Plan 2012:** (page 125)

See appendix E – Bracknell Forest equipped play provision:

Each category of play area has been plotted with their associated 'straight line distance' catchment in accordance with the Accessibility Benchmark standards set out in Fields in Trust (NPFA, 2008):

LAP - 60m

LEAP - 240m

NEAP - 600m

The map shows areas of the Borough served by play areas, and shows where provision is lacking.

“....**proposed major development sites** are generally **poorly served** by existing play areas. When development comes forward, opportunity should be sought to rectify this deficit. In the instance of SHLAA sites being developed and unable to provide for onsite play areas, the 'plus one' principle (refer to glossary) will be applied, using Section 106 contributions to raise standards of existing play areas able to serve the development ....”

Extract from **BFC Parks and Open Space Strategy 2012 (section 5.1)**

Outdoor playing space for children:

- A minimum standard of outdoor space for children's play of 0.8 ha (2 acres) per 1000 people

**Play England** is a leading authority on the provision of play areas. The recommendations are made by them when assessing and considering the provision of play areas:

**Location** is perhaps the single most important factor in how much children use playable spaces. In general, **children** like to **play locally** where they can be seen, see others and meet others. **Young people** are able to **roam further** although they, too, like to feel safe wherever they are with their friends. In addition, **disabled children** and **parents or carers with buggies** should be able to **access** play areas as much as non-disabled children. Often children will play with younger siblings who may need to be taken to the area in a buggy or pushchair.



FIGURE 7 ASCOT JUBILEE GROUND PLAY AREA



Play England also describes the 4 local **play indicators** that are recommended for use when **assessing** the **provision** of play opportunities:

- Participation
- Access to a variety of facilities and spaces
- Quality of facilities and spaces
- Satisfaction

More detailed information is available in their report:

<http://www.playengland.org.uk/media/202750/tools-for-evaluating-play-provision.pdf>

Play England report that recent research suggests that children's access to good play provision can:

- increase their self-awareness, self-esteem, and self-respect
- improve and maintain their physical and mental health
- give them the opportunity to mix with other children
- allow them to increase their confidence through developing new skills
- promote their imagination, independence and creativity
- offer opportunities for children of all abilities and backgrounds to play together
- provide opportunities for developing social skills and learning
- build resilience through risk taking and challenge, problem solving, and dealing with new and novel situations
- provide opportunities to learn about their environment and the wider community

The **wider benefits** are also gained (Play England) :

- Buildings and facilities used by play services are frequently seen as a focal point for communities
- Public outside spaces have an important role in the everyday lives of children and young people, especially as a place for meeting friend
- Parks and other green spaces are popular with adults taking young children out to play and for older children and young people to spend time together
- Parents can feel more secure knowing that their children are happy, safe and enjoying themselves
- Families benefit from healthier, happier children
- It offers opportunities for social interaction for the wider community and supports the development of a greater sense of community spirit, promoting social cohesion

#### Provision of Equipped Play Areas within Winkfield Parish:

There are 12 identified LEAPS (Local Equipped Areas of Play) and 1 Skate Park - **see appendix E.**

Ownership of the play areas is split between Winkfield Parish Council (Asher, King George V, Carnation Hall, Locks Ride Recreation, Fernbank Road, Blackmoor Close, Jubilee Ground, Allsmoor) and Bracknell Forest Borough Council (Longhill Park, Bog Lane, Worlds End, Savernake Park)

The provision is more centrally located and there is less to the North where the population is sparser.

### Consultation Findings

#### 2016 Winkfield Parish Neighbourhood Plan Survey (1413 participants)

- Children's equipped are ranked fourth most important community facility from the options provided with 80% of respondents rating this facility as important

<b><u>Facility</u></b>	<b><u>% 'Important'</u></b>	<b><u>% 'Good access'</u></b>
Pharmacy	96%	78%
Post Office	92%	76%
Recreational green outdoor spaces	91%	83%
General stores / newsagents	89%	83%
Children's equipped play area	80%	76%
Library	70%	60%

- The differential between importance and good access was relatively small with 76% of respondents classifying their access to equipped play areas as good
- 32% of respondents state that they used playgrounds
- Use of playgrounds was highest amongst respondents of Chavey Down and North Ascot New Road and lowest in Winkfield, Maidens Green and Brockhill
- Lowest "good access" rating was in Cranbourne (56%) and Brockhill (57%)

### Topic Group observations

- Despite a minority of respondents being households with children (28%) the importance rating for children's equipped play areas was still high amongst Winkfield Parishioners
- More people use playgrounds than have children in the household. This could be for example, grandparents using facilities with their families
- Use of playgrounds is likely to be influenced by the proximity of the facility to where people live

- The fact that importance rating and good access rating are relatively close would indicate that provision in terms of location is meeting the current demands of local communities reasonably well

### Summary

The benefits of access to play provision are well documented. The **existing provision** accessible to residents of Winkfield Parish should be **maintained** and **where appropriate improved**. The recommended allocation of children's play space as per the BFC Parks and Open Space Strategy 2012 (5.1) is 0.8ha per 1000 population which would equate to 12ha for Winkfield Parish.

It should be noted that, in addition to the cost viability of new/ improved provision, consideration will need to be given to the availability of suitable sites and the ongoing care and maintenance costs of play areas.

Should any major developments be allocated in the future within the Parish it should be ensured that these are adequately served by onsite play areas.

This summary should also be read in conjunction with section 3.3 Recreational Outdoor Spaces which noted that the recommended outdoor playing space is 2.4 ha per 1000 residents (BFC Parks and Open Space Strategy 2012). This figure comprises of 1.6ha for outdoor sport and 0.8ha outdoor space for children's play. Provision within Winkfield Parish on this basis should equate to 36ha however the actual figure is in the region of 18ha. It can therefore be concluded that there is a case for further expansion of outdoor playing space particularly if there is development within the parish which results in an increasing population.

## 3.5 Youth Provision

**Appendix F** details mapped provision (1 mile and 2 mile radius) within Bracknell Forest as a whole since there are not currently any operational Youth Centres within Winkfield Parish.

**Bracknell Local Development Plan 2012:** (table 6.2) details 7 Youth Centres, however since this report was published several of these have been closed as part of the Youth Modernisation Programme which is ongoing.

The Local Development Plan states that:

- Future of youth work provision in the Borough is being explored. Emerging provision should aim to be “future proof”, and so should aim to offer the physical space that can be utilised by a range of providers offering a variety of services to young people, not just the traditional “evening youth club”
- Where possible these (youth facilities) should be “stand alone “facilities
- Where sites are shared, such as in the hiring of community halls for youth provision, there are frequent clashes of interest and often difficulties in providing a continuity of service
- All the sites being considered are distant from any existing bespoke youth centre provision. The nature of young people’s use of youth centres is that they are community based, i.e it is unusual for significant numbers of users of a centre to live in a community other than that where the centre is provided.

**Bracknell Forest Council Plan 2015-2019** – one of the six strategic themes is “That people to live active and healthy life style” . Key measures include:

- Comprehensive public health programmes aimed at ... young people, including smoking cessation, weight management and sexual health are in place
- Accessibility and availability of mental health services for young people and adults is improved

**Current provision** within the Borough as detailed BFC Youth Support webpage (<http://www.bracknell-forest.gov.uk/youthsupport>) :

- [Coopers Hill](#) & [NRG](#) (Coopers Hill Youth and Community Centre Bracknell , behind Bracknell Railway Station)
- [The Spot at Sandhurst](#) (Sandhurst)
- [The Zone](#) (Great Hollands)

The centres that are most accessible to residents of Winkfield Parish in terms of distance are Coopers Hill and The Zone. It should be noted that these fall outside of Winkfield Parish boundaries.

Outside of the dedicated Youth Centre provision there are other opportunities for engagement in a variety of activities based within Winkfield Parish and surrounding areas - a good source of information is via The Ascot matters website. It is noted however that there are limited activities for older teenagers.

The BFC dedicated website for users of youth services within BFC (<http://www.xpresionz.co.uk>) details activities that are based in the centres and signposts to appropriate other activities based elsewhere within Bracknell Forest.

### **Future Provision**

The future role of the former TRAX building located in North Ascot needs to be established (noted as a required action under section 3.1), although current strategies for youth provision within the borough do not appear to include this.

#### **The Youth Modernisation programme (ongoing):**

- includes proposals for closure of North Ascot Youth facility
- states an area for development is the completion of the Youth Modernisation Plan
- states that reduction in funding has meant that focus has to be more directed towards vulnerable or at risk young people

**Youth Hub Plan** – The creation of a Bracknell Town Centre Youth hub was agreed by BFC June 2013 and was reiterated in the Bracknell Forest Council Conservative Election Manifesto 2015 which included following pledge:

“We will listen to young people and create a centrally located youth hub.”

### **Consultation Findings**

#### **1. 2016 Winkfield Parish Neighbourhood Plan Survey (1413 participants)**

- Overall 21% of respondents felt that current youth facility provision facilities meet their needs compared to 9% who felt their needs were not met. The majority (70%) had no opinion.
- Among households with children more are satisfied (32%) than not (17%) with the provision of Youth Facilities in the area - the majority have no opinion/ don't know
- Satisfaction is highest in Winkfield, Forest park , Winkfield Row
- Satisfaction is lowest in Cranbourne , Maidens Green , Brockhill and New Road (North Ascot)
- Of the 9% who felt needs were not met, 22% (28 respondents) stated that there were no or too few youth facilities.

### Summary

The funding to provide extensive local youth provision is no longer available and this is now an area that will need to be viewed as a wider Borough provision.

The Neighbourhood Plan questionnaire findings are that generally existing provision is adequate.

Whilst it is unlikely that it will be viable to provide any dedicated Youth Centre within Winkfield Parish the Borough provision which currently exists and may exist in the future should be **clearly promoted** and signposted within the various Parish communities in particular within those settlements expressing the lowest satisfaction with youth facilities provision e.g. via local community notice boards, Parish Council newsletter and website. This activity would fall outside of the Neighbourhood Plan.



FIGURE 8 COOPERS HILL YOUTH CENTRE BRACKNELL

### 3. 6 Meeting Places

Until fairly recently, most people in the world grew up, lived out their lives, and died within 10 or 20 miles of where they were born. To them, their communities meant what they had always known – families, neighbours, familiar places etc. Now, many people find themselves in places far from home, living in communities defined not by common acquaintance, knowledge, and culture, but by geography or economics. Rather than knowing their neighbours from childhood, they may not know their neighbours at all. Now, in order to create community, whether in a rural area, a small town, or a large city, it's often necessary to bring people together so that they can get to know one another, develop common interests, concerns, and goals. (Extracted from a report by Kansas University)

#### **National Planning Policy Framework 2012**

Paragraph 69:

*Planning policies and decisions, in turn, should aim to achieve places which **promote opportunities for meetings** between members of the community who might not otherwise come into contact with each other*

Paragraph 70:

***plan positively** for the provision and use of shared space, community facilities (such as local shops, **meeting places**, sports venues, cultural buildings, public houses and places of worship) and other local services to enhance the sustainability of communities and residential environments*

#### **Bracknell Forest Health and Wellbeing Strategy 2016-2020**

- Section on “Preventing people from becoming socially isolated and lonely” p14 describes why people may become isolated and the possible impacts on health.

**Defining good meeting places** - The Community Tool Box (part of the Kansas University's Work Group's role as a designated World Health Organization Collaborating Centre for Community Health and Development.)

<http://ctb.ku.edu/en/table-of-contents/implement/physical-social-environment/places-for-interaction/main>

By creating spaces where all members of the community can mix naturally and get to know one another as human beings, communities can become communities in the true meaning of the word.

*Good places for interaction are places where people – often from many parts of the community and/or diverse backgrounds – meet naturally and interact comfortably*

Good places for interaction are spaces that make people from different areas and backgrounds want to be there. In order for that to be the case, these spaces need four basic characteristics:

- There has to be a reason for people to go there
- There has to be a reason for people to want to stay once they've arrived e.g.

- Seating
- Sun and shade if an outdoor space
- Food and drink
- Pleasant views
- Green Space
- Water feature
- Interesting or pleasant places to walk
- People in the space have to feel safe and comfortable. Ways this can be achieved include:
  - The presence of a variety of individuals and groups
  - Good lighting
  - Safe areas for children to play
- The space has to be welcoming and accessible to everyone. For example:
  - Visibility and a welcoming entrance.
  - The ease with which the place can be reached.
  - Toilet facilities
  - All parts of the space should be accessible and usable, to the extent possible. e.g. no “Keep off Grass Signs”

Meeting places do not always have to be costly or complicated. In certain situations a simple approach can be a good option. See report below:

**The Bench Report** (by the Young Foundation Nov 2015) - funded by the Arts and Humanities Research Council

This report finds that benches though easily overlooked, play a crucial role in social life. Benches provide a free place for different individuals or groups to meet, a space for people to pause and feel a sense of belonging, and also serve as a necessary resting place for older people.

The report ([The Bench Project](#)) argues that a lack of benches will disproportionately impact groups for whom other social spaces, such as coffee shops, are not available due to their cost or social codes. Instead of removing benches, people should be encouraged to use them through good planning, design and management of spaces.

The availability of a good range of meeting places is crucial to a successful community. Within Winkfield Parish there are various opportunities for people to meet in a variety of places, however, the distribution of such places varies and the adequacy of such provision needs to be ensured based on what can be influenced by the community and what is affordable and sustainable.

### **Types of meeting places with Winkfield Parish**

See **Section 2.4** of this report – Register of Existing Facilities



**Community centres and halls** covered separately within this report – see section 3.1

**Public Houses and Restaurants** – it should be noted that commercially run facilities are subject to the business decisions of the owners. There are however, opportunities for local communities to have influence via the “Community Right to Bid” process (see below)

**Places of Worship** – an integral part of communities. Facilitators for key moments in the lives of individuals (weddings, funerals, christenings/baptisms) and providing more than just a place for



FIGURE 9 ST MARY'S CHURCH WINKFIELD

worship on a Sunday ( e.g. Coffee mornings , mother /toddler groups , choir membership , opening up church halls for use by the community )

**Libraries** - covered separately within this report – see section 3.2

**Recreational Outdoor Spaces** - covered separately within this report – see section 3.3

**Play Areas** - covered separately within this report – see section 3.4

**Winkfield Parish Council Office** - see below

**The Community Right to Bid** allows communities and parish councils to nominate buildings or land for listing by the local authority as an **Asset of Community Value**. An asset can be listed if its main use currently benefits the community (or it did so in the recent past). Listed assets remain on the list for up to five years. If a listed asset is sold during this time, a moratorium (pause) on the sale process (of up to six months) may be invoked, providing local community groups with a window of time to raise the finance to make a bid to buy the asset on the open market.

A recent example of a successful application for Asset of Community Value within the Parish is The Rose and Crown public house in Woodside (2014)



FIGURE 11 ROSE & CROWN WOOSIDE



FIGURE 10 WINKFIELD PARISH COUNCIL OFFICE

### Winkfield Parish Council Office

Located on Fernbank Road, North Ascot. Serving a community of approximately 15,000 residents spread over a wide geographical area. Most people who need to visit the office would need to access it by car. Apart from the office space utilised by the council employees to carry out their work, there is one small meeting room. Car parking is limited.

The suitability of the Parish offices to meet the current and future needs of the local community is currently under review by Winkfield Parish Council. Any future significant housing development within Winkfield Parish will increase demand upon the services of the Parish Council and suitable premises to meet the needs of current and future residents will be required. This could mean relocation to alternative and larger premises.

### Consultation Findings

#### 1. 2016 Winkfield Parish Neighbourhood Plan Survey (1413 participants)

- Mostly popular meeting places of the options was cafes/coffee shops followed by pub/restaurant/hotel

Where you like to meet other people:	<u>Frequently</u>	<u>Occasionally</u>	<u>Never</u>
Cafes/Coffee Shops	36%	50%	14%
Public House/Restaurant/Hotel	35%	52%	13%
Play/recreation/sporting grounds	29%	40%	31%
Garden Centres	26%	51%	23%
Place of Worship	17%	22%	61%
Library	9%	25%	66%

- 46% of respondents felt that opportunities to meet within the community could be improved / not enough opportunity
- Split between genders in terms of satisfaction is similar. 55% male satisfied , 53% females satisfied

- Split by age group – respondents within the age groups 31-50, 51-65 and 66-75 similar in terms of satisfaction (52-53%). However, the highest level of dissatisfaction (needs not met) amongst 66-75 age group (15%)
- Cranbourne and North Ascot (Fernbank Road) residents have identified the greatest demand for improving opportunities to meet with others from their communities.
- Cranbourne – 58% felt could be improved / not enough opportunity to meet (most popular suggestion was improved venues (Q26b 13 respondents)
- North Ascot – 50% felt could be improved / not enough opportunity to meet (most popular suggestion was pubs (Q26b 24 respondents)
- Parish wide – the highest level of dissatisfaction was amongst those that had lived in the parish less than one year (58%)

#### Topic Group observations

- Opportunities to meet people were the area where the highest level of dissatisfaction was identified within the community facility section of the consultation. Parish Wide 46% of respondents felt that opportunities to meet could be improved or existing provision provided insufficient opportunity. This was a considerably higher dissatisfaction rate than other areas reviewed (next highest level of dissatisfaction with provision was access to post office – 19%)
- How could opportunities to meet be improved?- Q26b – 306 free text responses (22% of total respondents). Most popular recommendations were more / better variety of clubs and events (32%) and pubs (29%)
- Improved “signposting” of meeting opportunities e.g. clubs / events could address some of the issues / dissatisfaction levels of residents – 62 respondents felt that more information would be of benefit
- Cranbourne and North Ascot (Fernbank Road) expressed the highest levels of dissatisfaction with opportunities to meet. Both of these settlements have also expressed a preference for small developments (fewer than 10 houses) – Cranbourne 73% and North Ascot Fernbank Road 64%. Developments of this size are unlikely to generate sufficient funding (CIL / S106) to provide for significant new social infrastructure
- Both Cranbourne and Maidens Green had identified a desire for a focal point within the communities – no specific opportunities (i.e. site specific) to provide these were identified within the consultation relating to opportunities to meet (Q26b)

- Garden Centres are ranked 4<sup>th</sup> as a frequent meeting place. These also often incorporate cafes which are highly valued as a meeting place by residents. Oaktree garden centre is located within Winkfield Parish and offers a popular café facility.

### Summary

Meeting places that are utilised and valued by the local community should be protected from unnecessary loss, in particular those that provide opportunities for **meetings** between members of the community who might not otherwise come into contact with each other.

The questionnaire responses would indicate that cafes/coffee shops and public houses/restaurants/hotels are most valued meeting places. In addition play/recreation grounds and garden centres are also valued as meeting places.

Planning proposals that enhance provision of such meeting place facilities to be supported provided there is no detrimental conflict with other community valued facilities and assets e.g recreational green space and that the proposal is deemed to be sustainable.

Losses of these valued facilities should only be permitted where:

An assessment has been undertaken which shows:

- The facility is surplus to requirements, or
- All reasonable efforts have been made to retain the facility (including evidence to confirm that the property or site has been marketed for a meaningful period, at a realistic price, and that there is no realistic interest in its retention for the current use), or
- That it would not be economically viable, feasible or practicable to retain the building or site for its existing use.
- Adequate provision exists in the locality, or the loss would be replaced by an equivalent or alternative in a suitable (and accessible) location.
- The proposal is for an alternative use, the benefit of which clearly outweighs the loss or it is for an alternative community use.

It should also be ensured that the Parish Council offices are suitably located and that the premises are of sufficient size to meet the needs of existing and future residents.

## 3.7 Key Commercial Facilities

As part of the Winkfield Neighbourhood Plan community facilities topic report, a review of key commercial community facilities has been undertaken. This has been restricted to those businesses that can be classified as :

Pharmacy

Newsagent / General store

Post office



### Local Policy:

**Bracknell Forest Comprehensive Plan – Issues & Options Document (June 2016)** sets out two options:

Option 1: A specific policy to include amongst others, shops (local convenience stores, post offices and chemists). To reflect the NPPF in relation to guarding against the unnecessary loss of valued facilities where it would reduce the ability to meet the community's day to day needs.

Policy to include reference to losses only being permitted where:

An assessment has been undertaken which shows:

- The facility is surplus to requirements, or
- All reasonable efforts have been made to retain the facility (including evidence to confirm that the property or site has been marketed for a meaningful period, at a realistic price, and that there is no realistic interest in its retention for the current use), or

- That it would not be economically viable, feasible or practicable to retain the building or site for its existing use.
- Adequate provision exists in the locality, or the loss would be replaced by an equivalent or alternative in a suitable (and accessible) location.
- The proposal is for an alternative use, the benefit of which clearly outweighs the loss or it is for an alternative community use.

Option 2: No policy. Assess each application on a case by case basis.

### **National Policy**

#### **National Planning Policy Framework (2012):**

Section 70 – (see section 2.3.1 of the Communities Facilities Topic Report for full content) – includes the requirement to:

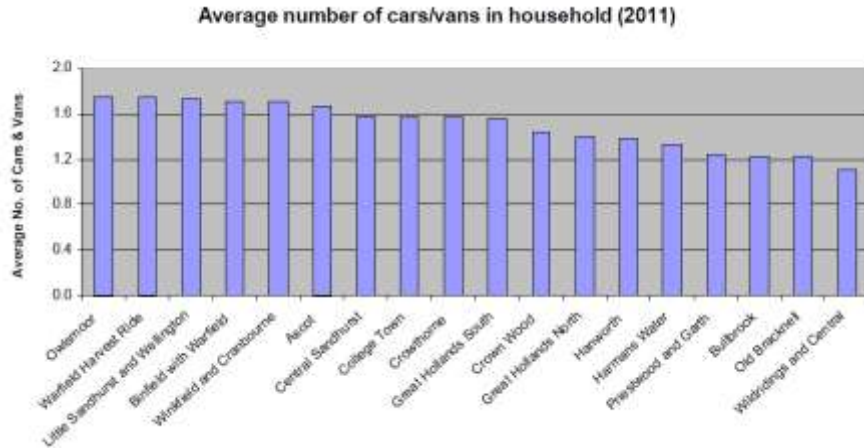
- plan positively for community facilities, such as local shops
- guard against the unnecessary loss of valued facilities and services
- ensure that established shops , facilities and services are able to develop and modernise in a way that is sustainable, and retained for the benefit of the community

#### **Winkfield Parish Evidence:**

The review of key commercial community facilities considered which facilities were most likely to be used by residents within individual settlements. Not all settlements have all or even any, key commercial facilities as per the definition of this review and it is necessary to inter-relate with other settlements to access necessary facilities which could be within Winkfield Parish or more widely Bracknell Forest or other Local Authority areas.

Car ownership with Winkfield and Cranbourne ward has a relatively high number of households with one or more cars – 5<sup>th</sup> highest ward out of 18 within Bracknell Forest. (2011 Census data)





Access by car to key commercial facilities is the only realistic option for many Winkfield Parish residents with distance to key commercial facilities being in excess of 1 mile (1600m) for most parishioners.

The best served settlement for is North Ascot and the settlement with least access is Maidens Green.

#### Sustainability:

Current guidance for new development looks to encourage sustainability by reducing the use of the car as a mode of transport to access key community facilities and to improve access by ensuring facilities are within walking distance.

1. Comprehensive Local Plan issues and Options (June 2016) :

“Promote mixed developments with access to facilities in easy walking distance.”

2. NPPF (paragraph 38) :

“Where practical, particularly within large-scale developments, key facilities such as primary schools and **local shops** should be located within walking distance of most properties”

This principal can also be applied to existing settlements by looking to protect from unnecessary loss those facilities that are reasonably accessible by foot or non-car means of transport.

The definition of “walking distance” is not clearly referred to by way of planning policy however a report by the Chartered Institution of Highways and Transportation (2000) provides useful information, statistics and guidance that can still be considered relevant:

#### ***Guidelines for Providing Journeys on Foot***

[www.ciht.org.uk/download.cfm/docid/D66AD936-281C-4220-BF109289B5D01848](http://www.ciht.org.uk/download.cfm/docid/D66AD936-281C-4220-BF109289B5D01848)

Table 3.2: Suggested Acceptable Walking Distance.

	Town centres (m)	Commuting/School Sight-seeing (m)	Elsewhere (m)
Desirable	200	500	400
Acceptable	400	1000	800
Preferred maximum	800	2000	1200

The report also states:

- Walking is an important mode for the vast majority of people but it is more important for certain groups, particularly children, older people, those without access to a car and those who are not the main driver within a household
- Journeys on foot have been declining since the mid-1980s. Overall, we are walking about a fifth less since 1985/86.
- Almost a quarter of walking journeys are for shopping purposes, this accounted for about one third of all shopping trips.

### Consultation Findings

#### 2016 Winkfield Parish Neighbourhood Plan Survey (1413 participants)

- Access to key commercial facilities is ranked highly by respondents
- Pharmacies have the largest gap between importance and good access with a differential of 18% with the gap for post offices standing at 16%
- Pharmacies – parish wide 78% rated access as good. Rated worse below average were Chavey Down (70%) , Cranbourne (73%) and Winkfield (76%). Car ownership in these 3 areas is high (98 -100%). Of those rating it as bad, the highest was in 66-75 (23%) and over 75 (18%) age groups.
- Post Offices – parish wide 76% rated access as good. Rated worse below average were Brockhill (40%) and Maidens Green (53%). Car ownership in these areas is 100%. Of those rating access as bad, the highest was amongst those in the age range 66-75 (26%) and over 75 (25%)



<b><u>Facility</u></b>	<b><u>% 'Important'</u></b>	<b><u>% 'Good access'</u></b>
Pharmacy	96%	78%
Post Office	92%	76%
Recreational green outdoor spaces	91%	83%
General stores / newsagents	89%	83%
Children's equipped play area	80%	76%
Library	70%	60%

#### Topic Group observations

- Access to key commercial facilities is highly valued by communities
- Pharmacies and post offices are where the greatest “important” and “good access” gap exists although the majority of respondents still rate their access as good (78%)
- Parish wide car ownership is high (98%) and is high across all age ranges. Whilst it is not ideal from a sustainable perspective that the car would be necessary to access key commercial facilities this does mean that parishioners are able to access what is required and hence satisfactions levels are generally good.

#### Summary:

Provision of key commercial facilities is not evenly distributed around Winkfield Parish which in part reflects the distribution of population. Ideally, provision of such facilities within reasonable access should be related to population levels and density and where possible be accessible by modes other than the private car.

**A potential policy** for the Neighbourhood Plan is that existing facilities should be protected from unnecessary loss unless it can be demonstrated that they are no longer viable or necessary or are to be replaced by a facility of greater community benefit. (see option 1 of BFC Issues and Options document)

## 4. Appendices

The following appendices form part of this report:

Appendix A – Community centres / hall users and activities

Carnation Hall, Forest Park Community Centre, Martin's Heron and the Warren  
Community Centre and North Ascot Community Centre

Appendix B – Community centres within 1 mile and 2 mile radius maps

Appendix C - Ascot Heath opening hours

BFC library provision 1 and 2 mile radius

Library provision pertaining to Winkfield Parish 2 mile radius

Appendix D – Sports field provision maps (Bracknell and Winkfield Parish)

Appendix E - Equipped play area provision maps (Bracknell and Winkfield Parish)

Appendix F – Bracknell Forest Youth Facilities

Appendix G – Key Commercial Facilities

## Appendix A (1 of 4)

**Carnation Hall**  
**Chavey Down Road, Winkfield Row, RG42 7PA**  
**Activities at Carnation Hall**

<b>Monday</b>	Chavey Down Pre-school Hartbeeps (pre-school sensory) Pilates Kumon Maths and English Tutoring Barch Dance Academy The Heart Rehabilitation Organisation (Berks) Yoga	09.00 – 15.00 09.30 – 12.30 10.00 – 11.00 15.15 – 17.15 17.30 – 21.00 18.30 – 20.30 20.00 – 21.00
<b>Tuesday</b>	Chavey Down Pre-school Jo Jingles (pre-school sensory) The Heart Rehabilitation Organisation (Berks) Short Mat Bowls Alcoholics Anonymous Winkfield Parish Council meetings	09.00 – 15.00 09.30 – 12.00 15.45 – 18.30 19.00 – 21.30 13.00 – 14.30 18.45 – 22.00
<b>Wednesday</b>	Chavey Down Pre-school Jo Jingles (pre-school sensory) Sewing and Textiles Club Pilates Kumon Maths and English Tutoring Barch Dance Academy Artemis Studios Elite Cheer Squad Pilates	09.00 – 15.00 09.30 – 11.00 10.00 – 12.00 11.30 – 12.30 15.15 – 17.15 17.30 – 19.15 19.30 – 21.30 19.00 – 21.30
<b>Thursday</b>	Chavey Down Pre-school Jo Jingles (pre-school sensory) The Heart Rehabilitation Organisation (Berks) Clubbercise Carnation Badminton Club World Ship Society (wk1 / mnth)	09.00 – 15.00 10.00 – 12.30 17.15 – 18.45 19.00 – 20.00 20.00 – 22.00 19.30 – 22.30
<b>Friday</b>	Chavey Down Pre-school The Heart Rehabilitation Organisation (Berks) Jo Jingles (pre-school sensory) Sanctuary Baby and Toddler Group Winkfield Rainbows Dynamite Kids Club	09.30 – 12.30 07.30 – 09.15 10.00 – 12.00 12.45 – 14.45 16.45 – 17.45 18.00 – 21.00
<b>Saturday</b>	The Heart Rehabilitation Organisation (Berks) Indian Community Association Yoga Karate School of Defence Availability for individual hirers (parties, etc.)	07.45 – 09.00 08.30 – 11.00 09.30 – 11.00 11.30 – 22.00
<b>Sunday</b>	Joel's Place Family Worship Availability for individual hirers (parties, etc.)	09.00 – 13.00 13.30 – 22.00
<b>Ad Hoc Users</b>	Ascot Alzheimer's Association Cats Protection League Camberley Reel Scottish Dancing The Maidenhead Scottish Dancing Club Englemere Decorative and Fine Arts Society Ascot Horticultural Society Spotlights Musical Theatre Group Bracknell Choral Society	

## Appendix A (2 of 4)

## Forest Park Community Centre – Timetable of Regular Hirers

	Room	AM	PM	Evening
Monday	Hall	Berks Autistic Society Parent Support Group 9.30am - 11.30am Monthly meetings		Aerobics - PAYC 7.30pm - 8.30pm Liz Miller
	Lounge	Little Movers & Shakers 10am - 11am 11.30 - 12.30pm Nellie Nomeikiene	Little Movers & Shakers for Babies 2pm - 2.30pm Nellie Nomeikiene	Stay Young Pilates 6.30pm - 7.30pm / Bracknell Lions @ 7.45pm 2 <sup>nd</sup> Monday of month
Tuesday	Hall	Childminders Drop In 10am - 11.30am	Slimming World 3.30pm - 5pm Marelise Morley	Slimming World 5.30pm - 7pm & 7.30pm - 9pm
	Lounge	Little Movers & Shakers for Toddlers 10am - 10.45am Nellie Nomeikiene	Little Movers & Shakers for Babies 1.30pm - 2pm Nellie Nomeikiene	Kuzala Yoga - PAYC 7.30pm - 9pm Sue Altman
Wednesday	Hall	Toddlers Drop In - PAYC 10am - 11.30am	Bracknell & District Parkinson Physio Class 1pm - 3pm / Dancexite 4pm & 5.30pm Lowri Hughes	Dog Training 7.15pm - 8.15pm Katy & Rob Munro
	Lounge	Little Movers & Shakers for Toddler 10am - 11am 11.30am - 12.30 Nellie Nomeikiene	Crafty Sew & Sews 1.15 - 3.15 2 <sup>nd</sup> & 4 <sup>th</sup> Wed. each month / 1.15 - 3pm Parkinson Carers' meeting 3 <sup>rd</sup> Wednesday of month	Yogalates - PAYC 8.30pm - 9.30pm Liz Miller
Thursday	Hall	Childminders Drop In 10am - 11.30am	Forest Park Short Mat Bowls 2pm - 4.30pm / Judo for Children 5pm - 6.30pm Ryan Joseph	Clubbercise 7.20pm & 8.10pm Amy White
		Foster Carer's Support Group 10am - 12 (Fortnightly)		Pure Pilates 7pm - 8pm / 8pm - 9pm Vicky Samways
Friday	Hall	Toddlers Drop In - PAYC 10am - 11.30am	Woodlands Bowls 2pm - 4pm	Forest Park Short Mat Bowls 7pm - 9.30pm
	Lounge			
Saturday	Hall	Kick boxing & Kung Fu 9am - 11am		
	Lounge	Yoga Sandi Weit 8.30am - 10am	Belly Dance Catriona Barclay-Langridge 11am - 2pm (Fortnightly)	
Sunday	Hall	Forest Park Community Church (www.ciseb.org) 9.30am - 11am All Welcome		
	Lounge			

For enquiries/to book the main hall or lounge please call 01344 302872 or email [forestparkcc@live.co.uk](mailto:forestparkcc@live.co.uk)

## Appendix A (3 of 4)



**MARTIN'S HERON & THE WARREN COMMUNITY ASSOCIATION**  
*The Community Centre, Whittori Road, Martin's Heron, Winkfield, Bracknell, RG12 9TZ*  
 Registered Charity Number: 800605

**ACTIVITIES AT THE MARTIN'S HERON & THE WARREN  
 COMMUNITY CENTRE (SPRING 2016)**

MONDAY	HERON HALL	<ul style="list-style-type: none"> <li>Plus Three Nursery</li> <li>MHSD Ballet</li> <li>Adult Jazz Dance</li> <li>Tendoshingan Dojo Martial Arts</li> </ul>	09:30 – 12:30 15:45 – 19:00 19:00 – 20:30 20:30 – 21:30
	DOROTHY HAYES ROOM	<ul style="list-style-type: none"> <li>East Berkshire Ostomy Club</li> <li>MHSD Ballet &amp; Tap Dance Classes MHSD</li> <li>MHSD</li> <li>Tendoshingan Dojo Martial Arts</li> <li>DDMIX with Miss George</li> </ul>	14:00 – 16:00 16:15 – 17:00 18:00 – 20:00 20:00 – 20:30 20:30 – 21:30
TUESDAY	HERON HALL	<ul style="list-style-type: none"> <li>Plus Three Nursery</li> <li>MHSD Modern &amp; Tap Dance Classes</li> <li>SW Zumba Group</li> </ul>	09:30 – 12:30 16:00 – 20:00 20:00 – 21:00
	DOROTHY HAYES ROOM	<ul style="list-style-type: none"> <li>MHSD Tap Classes</li> <li>MHSD</li> </ul>	17:00 – 18:15 19:15 – 20:00
WEDNESDAY	HERON HALL	<ul style="list-style-type: none"> <li>Plus Three Nursery</li> <li>Children's Ballet, Modern and Tap Classes</li> <li>Ilusion Flamenco (Beginners/Intermediary)</li> <li>Ilusion Flamenco</li> </ul>	09:30 – 12:30 16:30 – 18:15 18:15 – 20:00 20:00 – 21:15
	DOROTHY HAYES ROOM	<ul style="list-style-type: none"> <li>MHSD Tap &amp; Ballet</li> <li>Adult Tap Classes</li> </ul>	15:45 – 18:15 18:15 – 21:15
THURSDAY	HERON HALL	<ul style="list-style-type: none"> <li>Plus Three Nursery</li> <li>MHSD Ballet &amp; Tap Classes</li> <li>SW Zumba Group</li> </ul>	09:30 – 12:30 17:00 – 19:30 19:30 – 20:30
	DOROTHY HAYES ROOM	<ul style="list-style-type: none"> <li>Weightwatchers</li> <li>TigerLily Yoga</li> </ul>	19:00 – 20:00 20:15 – 21:30
FRIDAY	HERON HALL	<ul style="list-style-type: none"> <li>Plus Three Nursery</li> <li>Little Kickers Football [2% to 5 year olds]</li> <li>Bollywood Dancing</li> </ul>	09:30 – 12:30 13:00 – 15:00 18:30 – 20:00
	DOROTHY HAYES ROOM	<ul style="list-style-type: none"> <li>Gracefulbow Yoga</li> </ul>	20:15 – 21:15
SATURDAY	HERON HALL	<ul style="list-style-type: none"> <li>Little Kickers Football [18 months to 5 year olds]</li> </ul>	08:15 – 13:00
	DOROTHY HAYES ROOM	<ul style="list-style-type: none"> <li>Chance to Dance (Dance club for children with Special Educational Needs) (Fortnightly)</li> <li>Brickies Club (Lego Club for 6 to 11 Year Olds)</li> </ul>	09:00 – 11:15 13:30 – 17:30
CLOSED SUNDAYS	<p><b>At the present time, no further bookings for private events are being taken.</b></p> <p><b>Please do not telephone about private hiring queries</b></p> <p>For enquiries, please email: <a href="mailto:community_centre@mbwca.co.uk">community_centre@mbwca.co.uk</a> or leave a message in the Postbox.</p>		

## Appendix A (4 of 4)

**North Ascot Community Centre**  
**Fernbank Road, Ascot, Berkshire, SL5 8LA**  
**Contact 01344 890668 for bookings**

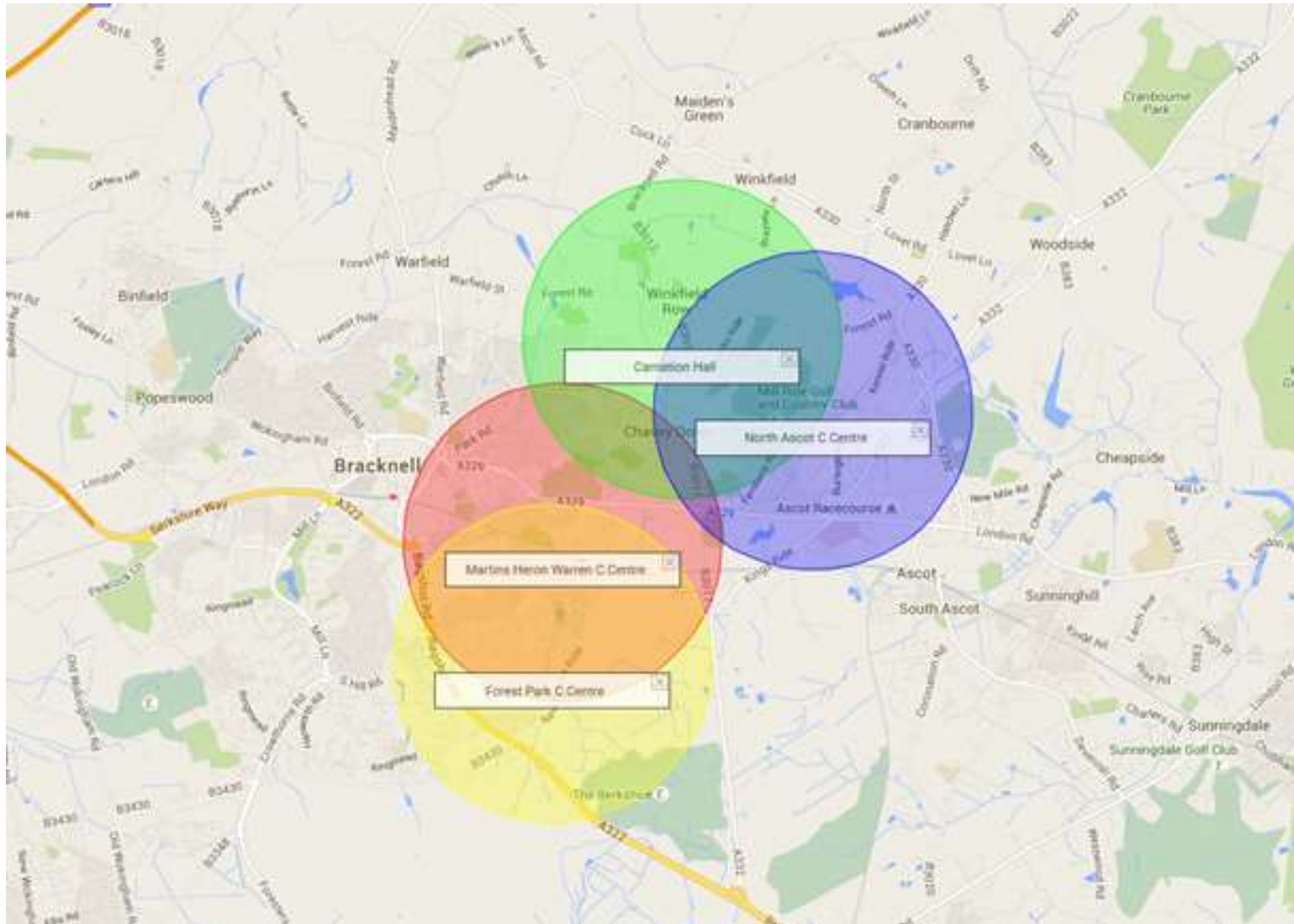
	Morning	Afternoon	Evening
<b>Monday</b>	Breakfast Club 08:00 - 09:00 Old School Day Nursery Ascot Day Nursery	Old School Day Nursery Ascot Day Nursery After School Club 15:00 - 18:30	Aerobics 20:00 - 21:00 NACA Meeting (monthly) 20:00 - 21:00
<b>Tuesday</b>	Breakfast Club 08:00 - 09:00 Ascot Day Nursery	Ascot Day Nursery Ballet 15:30 - 19:00	Art Group 19:30 - 21:30
<b>Wednesday</b>	Breakfast Club 08:00 - 09:00 Old School Day Nursery Ascot Day Nursery	Old School Day Nursery Ascot Day Nursery Drop In Group 13:00 - 15:30 After School Club 15:00 - 18:30	Ascot Ladies Last Wed every month 20:00 - 22:00
<b>Thursday</b>	Breakfast Club 08:00 - 09:00 Old School Day Nursery Ascot Day Nursery	Old School Day Nursery Ascot Day Nursery After School Club 15:00 - 18:30	Circuit Training 19:00 - 20:00
<b>Friday</b>	Breakfast Club 08:00 - 09:00 Old School Day Nursery Ascot Day Nursery	Old School Day Nursery Ascot Day Nursery After School Club 15:00 - 18:30	Circuit Training 20:00 - 22:00
<b>Saturday</b>	Yoga 09:30 - 11:00	Available for Casual Bookings	Available for Casual Bookings
<b>Sunday</b>	Available for Casual Bookings	Available for Casual Bookings	Available for Casual Bookings

**In addition to the Main Hall we also have a Meeting Room available for hire.**



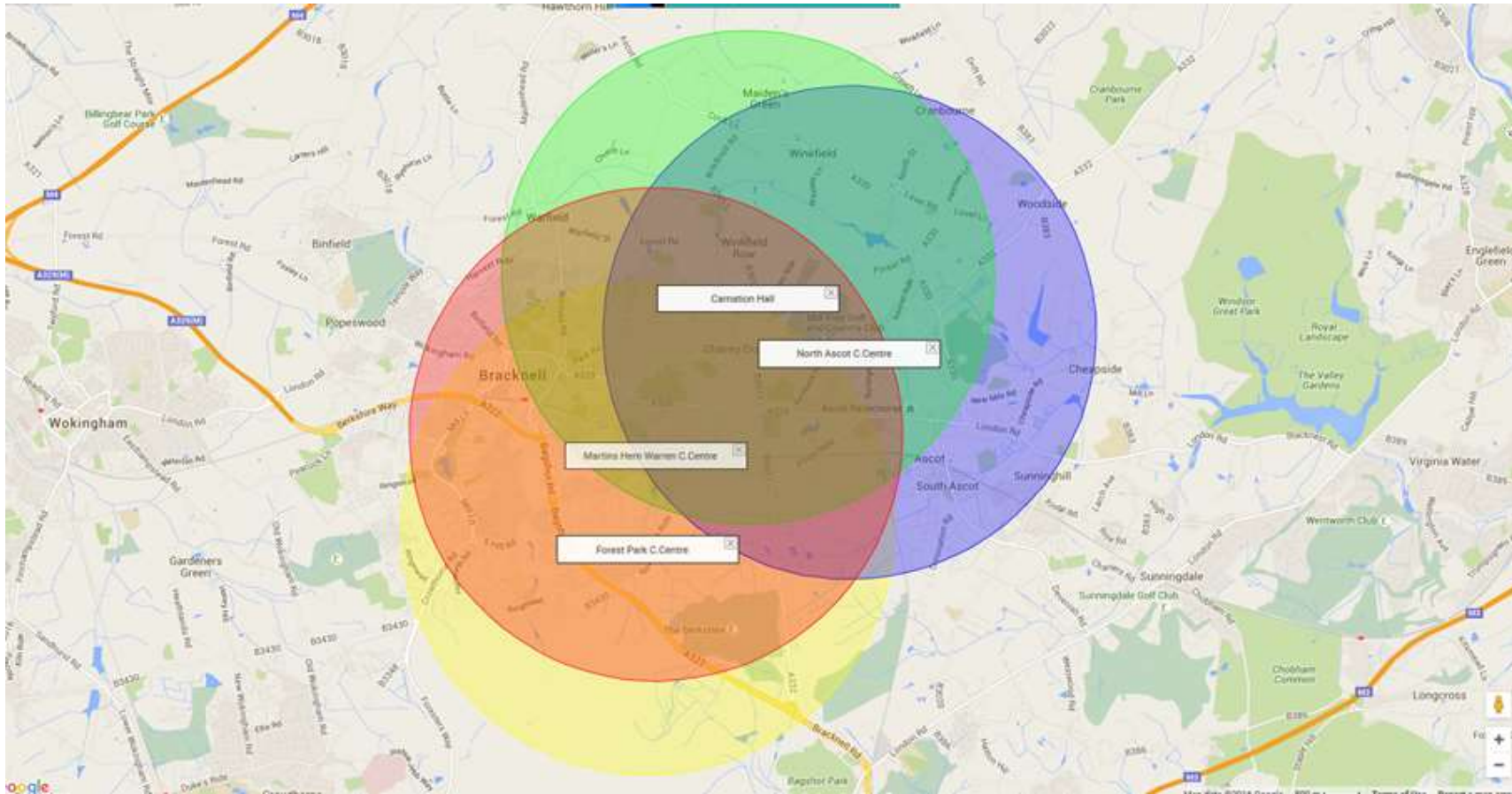
## Appendix B (1 of 2)

## Winkfield Parish community centres – 1 mile radius



## Appendix B (2 of 2)

## Winkfield Parish community centres – 2 mile radius





## Appendix C (1 of 3)

### Ascot Heath Library

Fernbank Road, Ascot, SL5 8LA

Tel: 01344 884030, Fax: 01344 885472

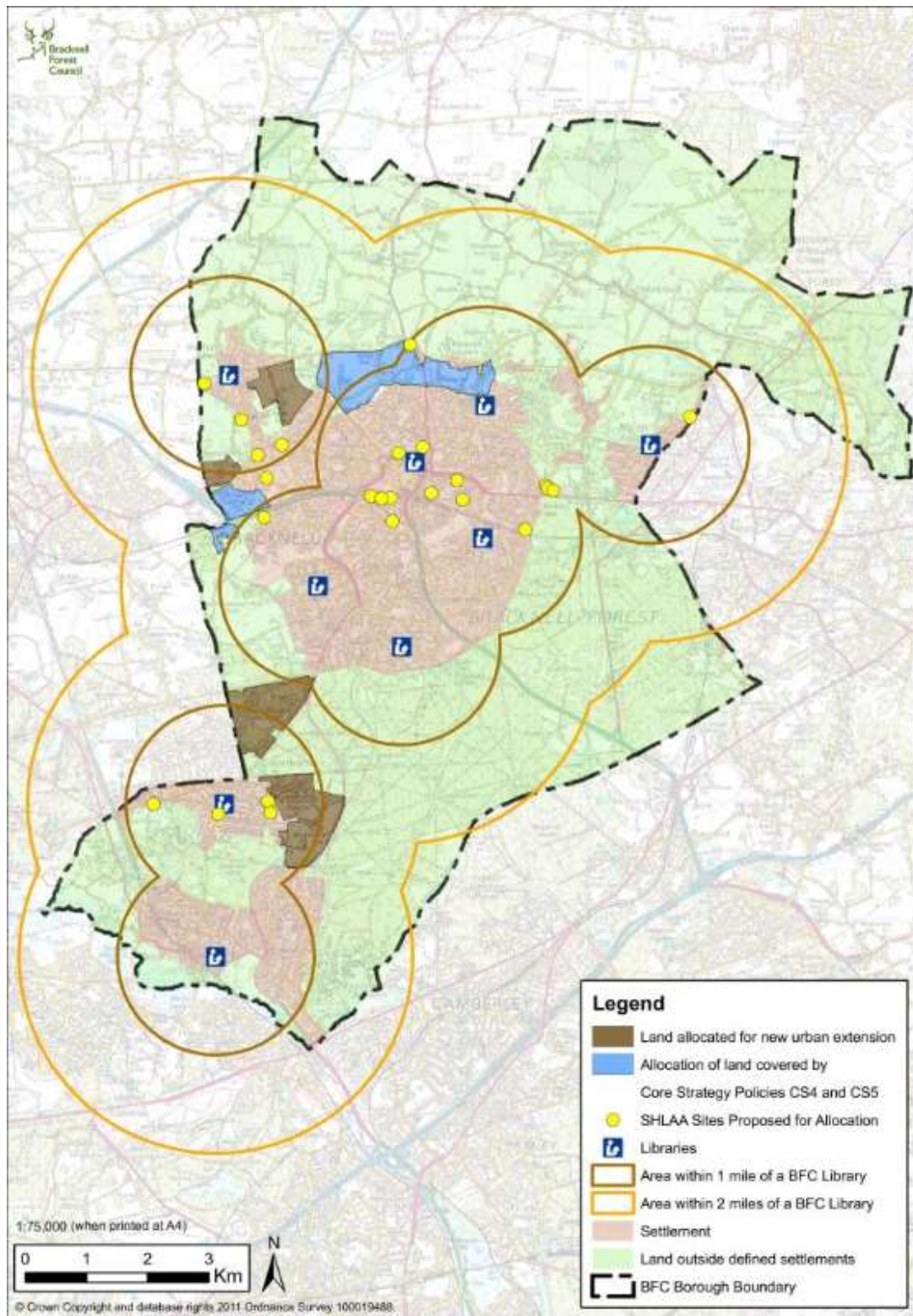
[Send an enquiry to Ascot Heath Library](#)

#### Opening hours for Ascot Heath Library

Day	Opening hours
Monday	9:30am to 1pm and 2pm to 7pm
Tuesday	2pm to 5pm
Wednesday	Closed
Thursday	9:30am to 1pm and 2pm to 7pm
Friday	2pm to 5pm
Saturday	9:30am to 12:30pm
Sunday	Closed

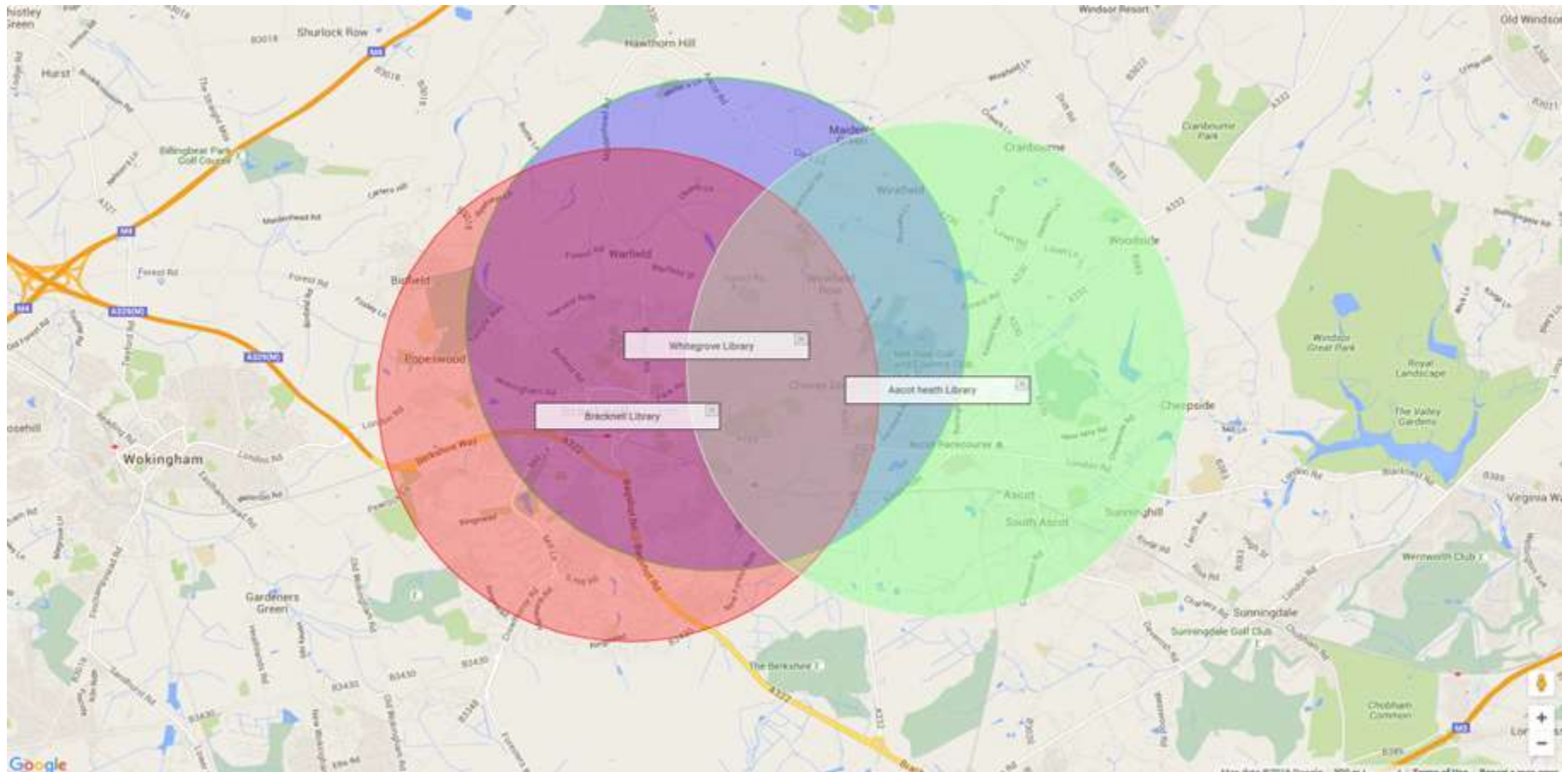
## Appendix C (2 of 3)

## Bracknell Forest library provision – 1 mile and 2 mile radius



## Appendix C (3 of 3)

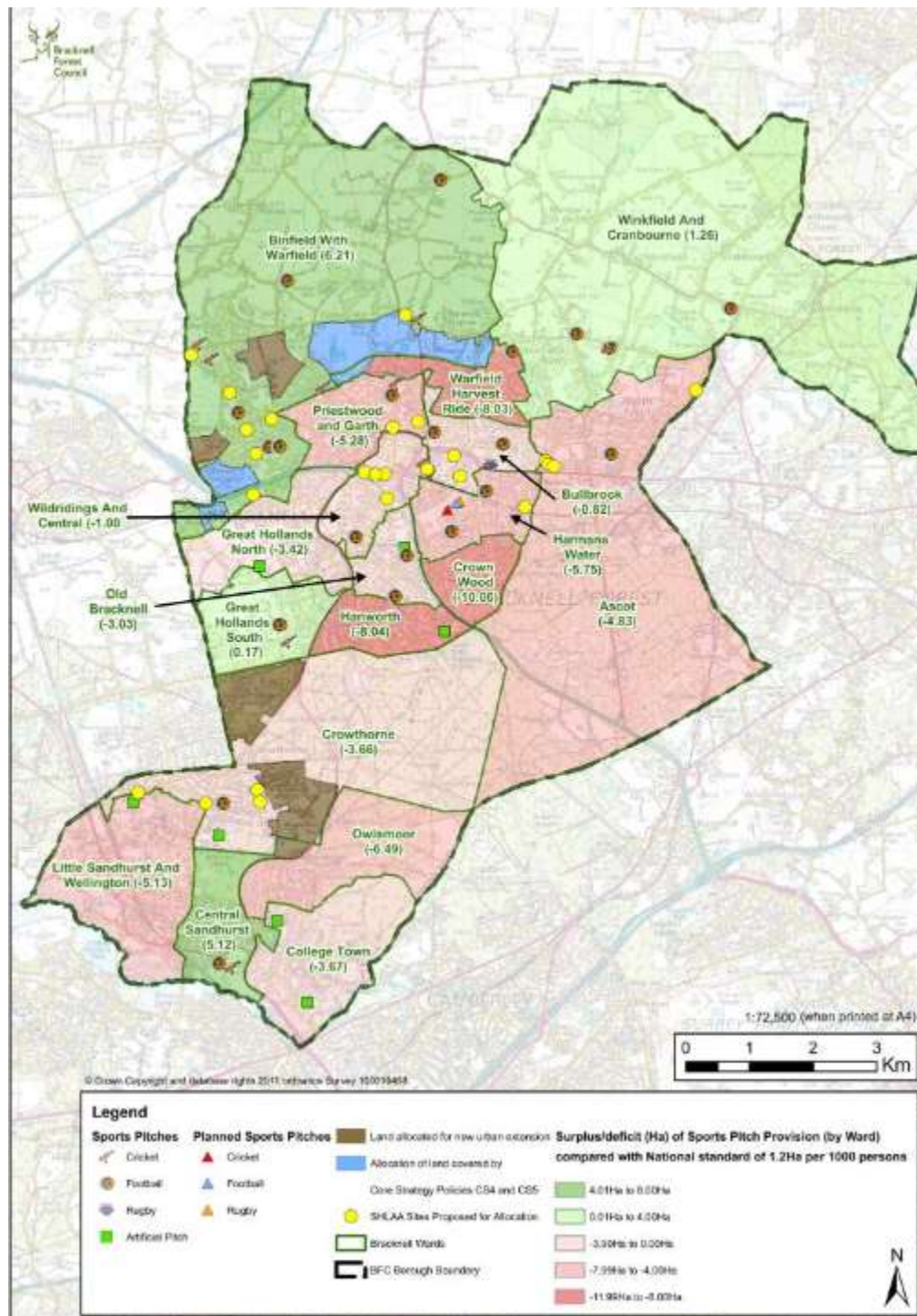
## Library provision relevant to Winkfield Parish – 2 mile radius





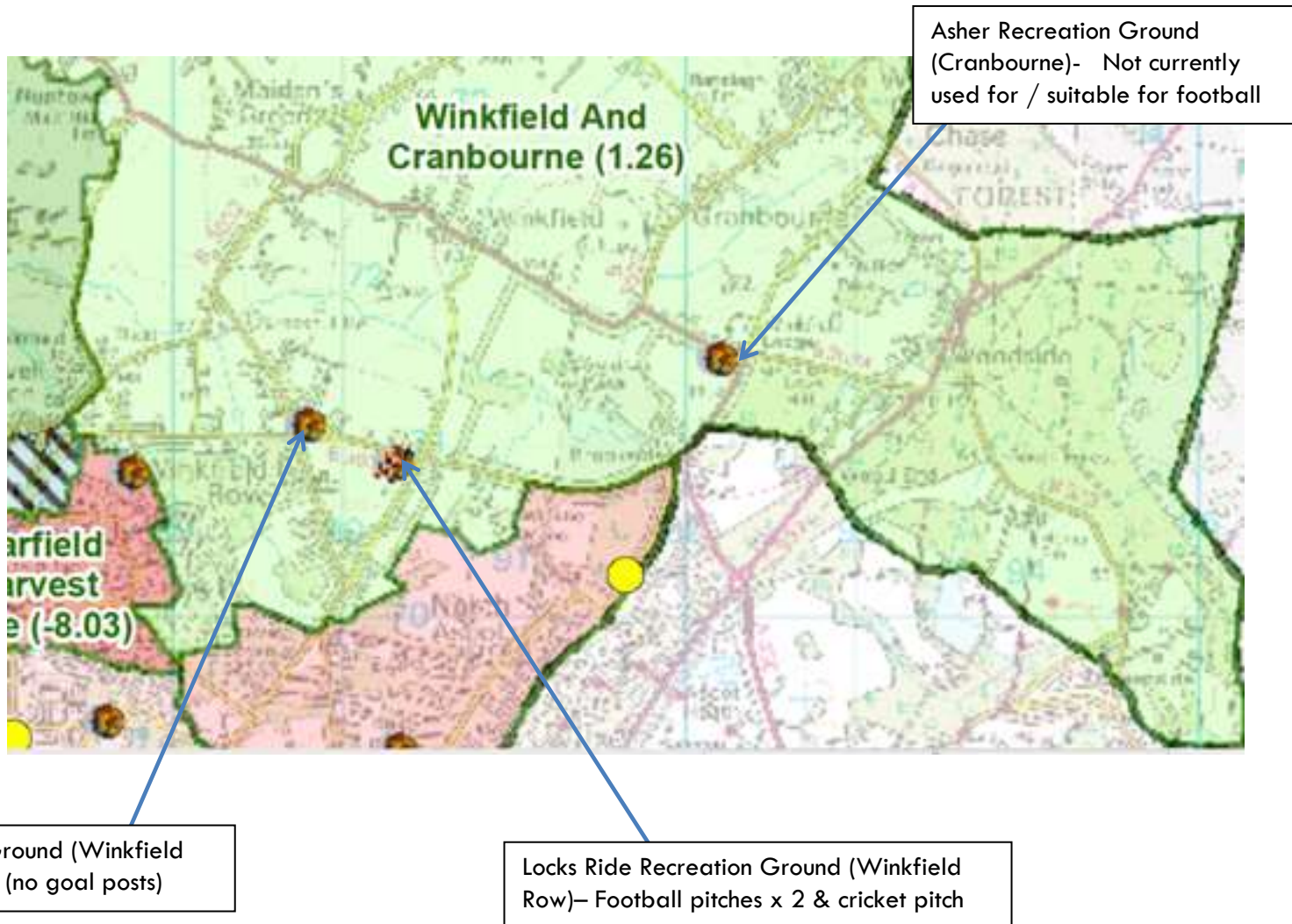
# Appendix D (1 of 2)

## Sports pitch provision in Bracknell Forest



## Appendix D (2 of 2)

### Sports pitch provision in Winkfield Parish



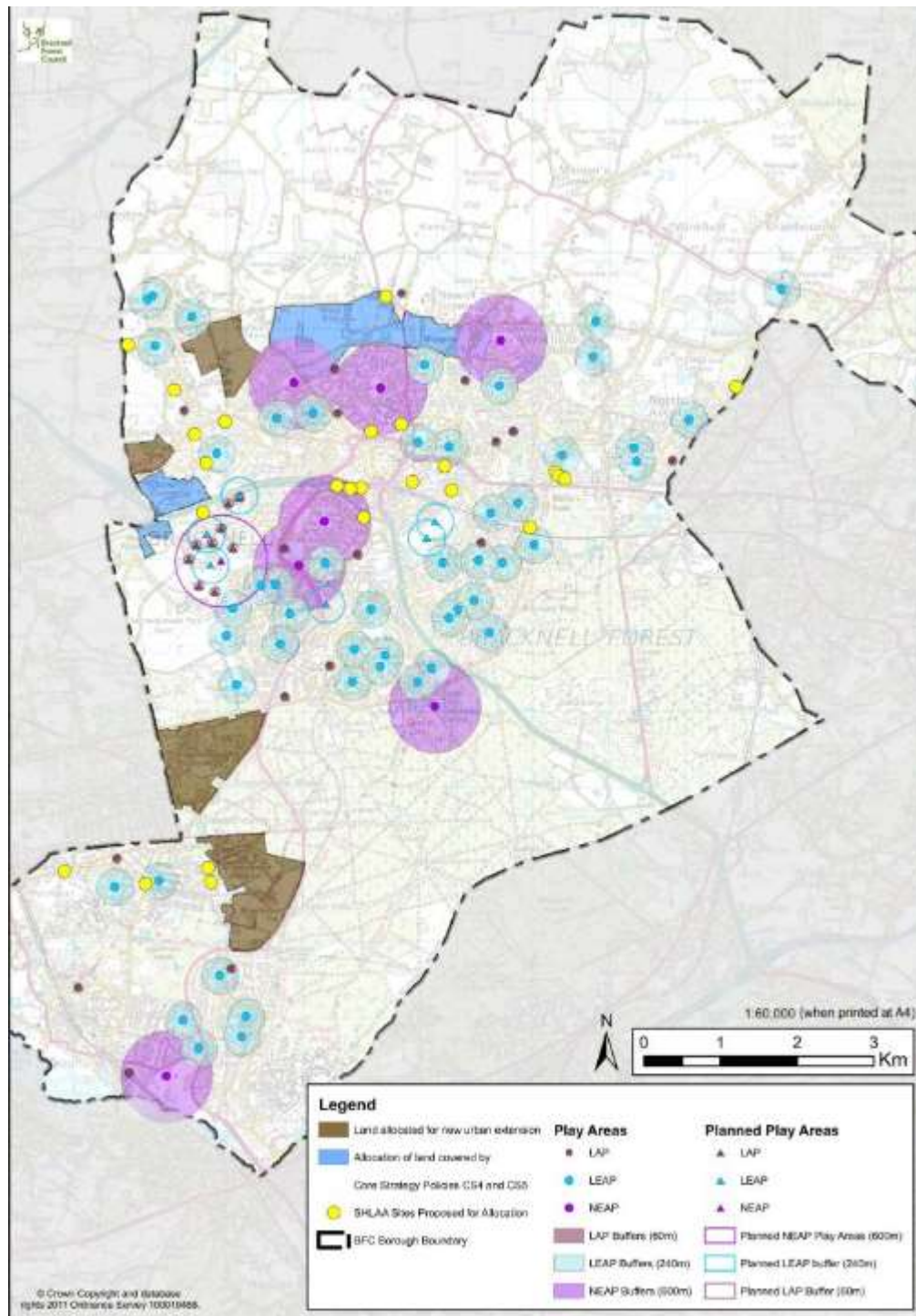
## Appendix D1

Play Areas	Area of whole site m2	Hectare conversion	Notes
Allsmoor	18211	1.8211	
Asher	10802	1.08	approx. excluding allotments
Blackmoor Close	931	0.0931	approx.
Bog Lane	2907	0.29	approx.
Carnation Hall	7013	0.7	approx.
Fernbank Road	1656	0.1656	
Jubilee Ground	18211	1.8211	includes tennis courts
King George V	15613	1.5613	
Locks Ride	32942	3.2942	
Longhill Park	2562	0.26	approx. play area and skate park only
Savernake Park		6.5	
Worlds End	478	0.05	approx.
		17.6364	



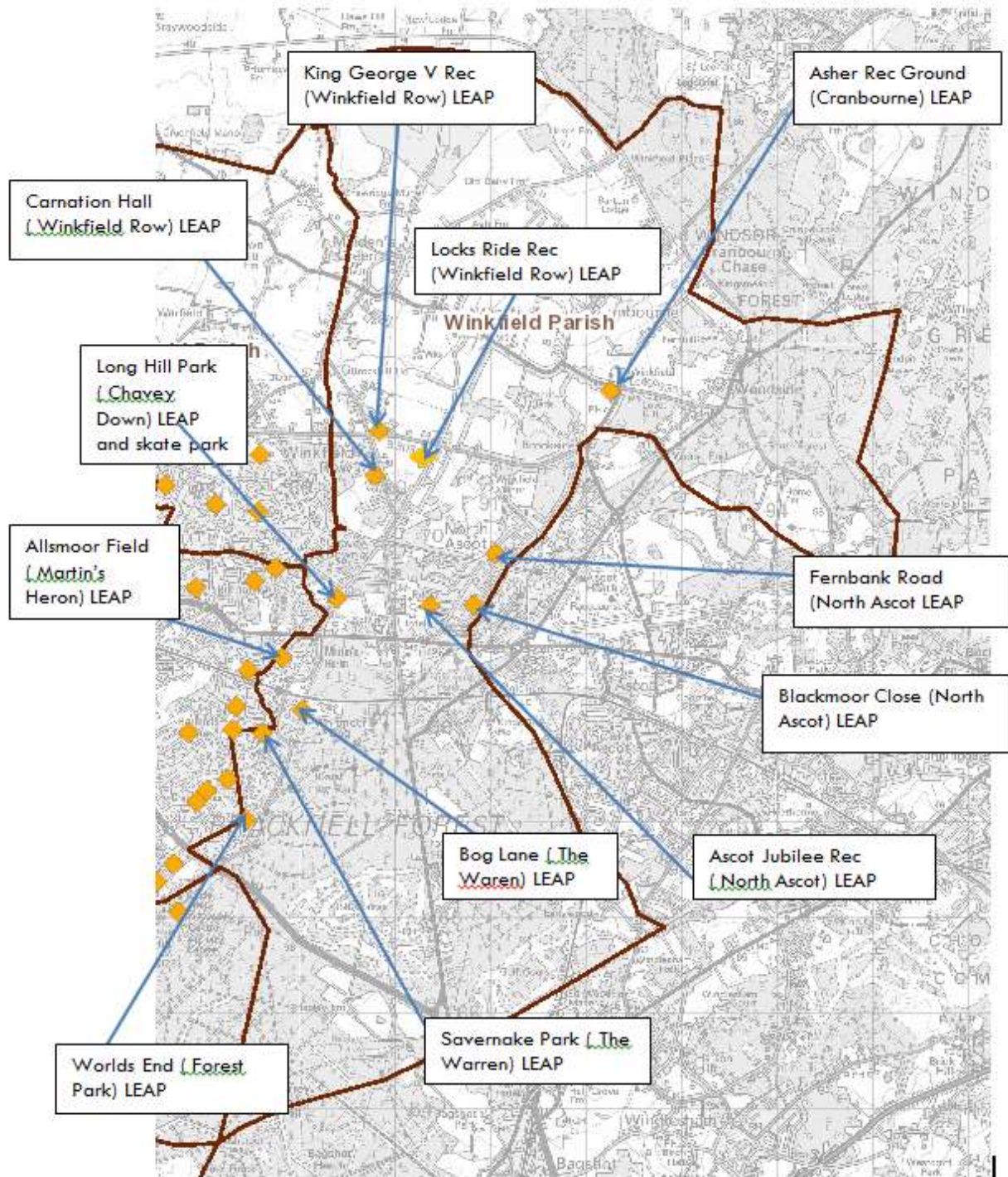
# Appendix E (1 of 4)

## Play Area provision in Bracknell Forest



## Appendix E (2 of 4)

### Play Area provision in Winkfield Parish





LEAP (Local Equipped Area of Play)

LAP (Local Area of Play)

## Appendix E (3 of 4)

### Equipped Play Areas within Winkfield Parish

Location	Equipment / Facilities Available
Locks Ride Recreation Ground (Winkfield Row)	Splashpad, beach area with sand, BBQ and seating area, Adult Gym Equipment, double-zip wire, trampoline. BBQs can be hired, toilet facilities Park seats and picnic benches
Allsmoor Field (Martin's Heron)	Sutcliffe swings – 1.8m – 2 cradle seats, Sutcliffe swings – 2.4m Sutcliffe Toddlerzone Multiplay Unit , Record Livewire Panel Crazy Twister, Hags Agito Unus Multiplay Unit, Hags Multi Pondo See-Saw, Kaiser and Kuhne Basket Swing , Kaiser and Kuhne Spring See-Saw , Sutcliffe Spring Rocker , 1 Streetwise combination goal (tarmac kick-about area) Lappset fitness trail (7 units, all wood, 5 over grass, 2 with wet pour safer surfacing) 1 Game and Playtime drop shot Park seats
Ascot Jubilee Ground (North Ascot)	Sutcliffe swings - 1.8m - 2 cradle seats , Sutcliffe swings - 2.4m. Sutcliffe Toddlerzone Multiplay Unit, Record Livewire Panel, Crazy Twister, Hags Agito Unus Multiplay Unit, Hags Multi Pondo See-Saw, Kaiser and Kuhne Basket Swing, Kaiser and Kuhne Spring See-Saw, 1 Streetwise combination goal (tarmac kick-about area), Lappset fitness trail (7 units, all wood, 5 over grass, 2 with wet pour safer surfacing), 1 Game and Playtime drop shot Park seats
Asher Recreation Ground (Cranbourne)	1 Wicksteed Slide - 5.8m , 1 Sutcliffe Play Wok - , Hirst Swings - 3m - 2 flat seats , Wicksteed Swings - 2.4m - 2 cradle seats , 1 Wicksteed Rocking Rockette , 1 Ausplay Spring Rocker , 1 Hopscotch area Park seats
Blackmoor Close Play Space (North Ascot)	1 Levercrest "Goldfish" multi-play unit (anti erosion tiles), Sutcliffe swings - 2.4m 1 cradle and 1 flat seat (wet pour safer surfacing), 1 Landscape Structures Log Roll (anti-erosion tiles), 1 Sutcliffe Spring Rocker (wet pour safer surfacing)
Fernbank Road Play Area (North Ascot)	1 Parkplay toddler multiplay unit , 1 SMP Polynesia Spring Rocker, 1 Playworld Spring Rocker, 1 Sutcliffe Dizzy Disc, 1 Proludic see-saw , Sutcliffe swings - 2.4m - 1 cradle and 1 flat seat Park seats
King George V Recreation Ground	1 Wicksteed slide 5.8m, 1 SMP Helicopter climbing frame, 1 Record Roundabout - 1.8m, Hirst Swings - 3m - 2 flat seats , Wicksteed Swings - 2.4m - 2 cradle seats, 2 Landscape structures Spring Rockers, 1 Rocking Rooster, 1

(Winkfield Row)	Hopscotch area. Park seats and picnic tables
-----------------	-------------------------------------------------

## Appendix E (4 of 4)

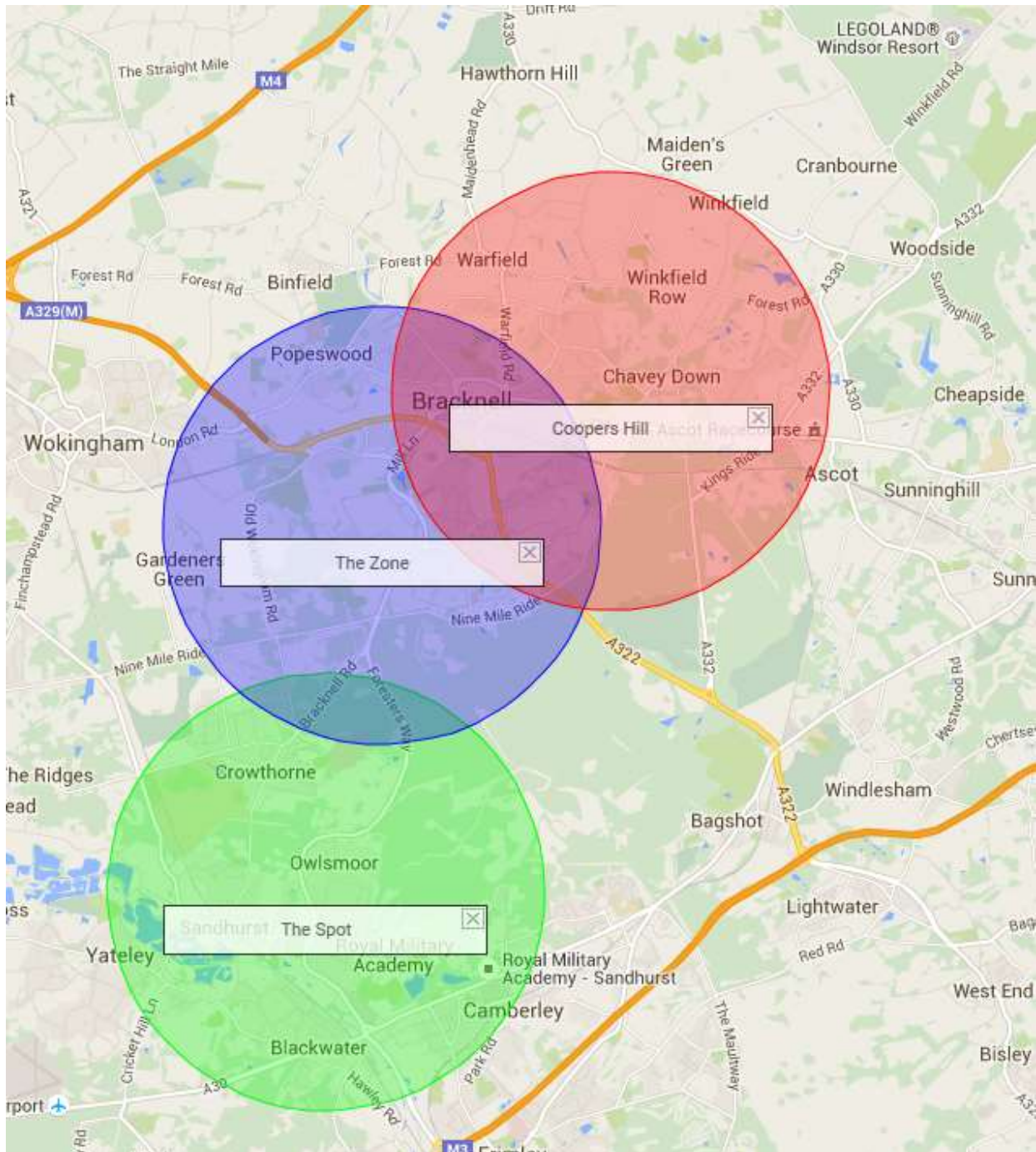
### Equipped Play Areas within Winkfield Parish cont.

Location	Equipment / Facilities Available
Carnation Hall Play Area (Winkfield Row)	Selection of play equipment Park seat
Longhill Junior and Toddler Park Play Area (Chavey Down – BFC managed)	Speed giro (roundabout), toddler swing, and basket swing. Suitable for juniors and seniors.
Longhill Skate Park (Chavey Down – BFC managed)	The skatepark contains a large number of trick orientated objects including a bowl and a large ramp combination in addition to a small wave ramp and quarter pipe, corner ramp and box unit, spined grind box, rough ramp and grind box, multi ramp and a combination vertical wall/platform unit.
Savernake Play Area (The Warren –BFC managed))	Includes Aladdin's cave slide for toddlers, tower slide for juniors, senior and toddler swings, springer and spicas (spinning poles), space net and multi unit. Suitable for toddlers and juniors
Bog Lane Play Area (The Warren –BFC managed)	Multi-unit with slide, spinning dish, trampoline, springer, swings (toddler, senior & basket) and a trim trail.
World's End, Pyegrove Chase (Forest park – BFC Managed)	Toddler area includes swings, springy and slide. Senior area includes a skate unit, two goals, a teen shelter and basketball net.



## Appendix F (1 of 2)

## Bracknell Forest Youth Centre Provision – 2 mile radius





## Appendix G (2 pages) - Key Commercial Facilities (those highlighted in red are outside of Winkfield Parish)

Settlement	Local key commercial facility	Name	Location	Distance from Settlement
Winkfield Row	Pharmacy	David Pharmacy	New Road , North Ascot SL5 8QQ	1.5 miles (2414m)
		Tesco	Tesco , County Lane , Warfield RG42 3JP	1.3 miles (2092m)
	Newsagent /General Store	The Late Shop	Warren Row , North Ascot SL5 8HN	2.1 miles (3380m)
		Cost Cutter	Royal Hunt Parade , North Ascot SL5 8JR	2 miles (3219m)
		Londis	New Road , North Ascot SL5 8QH	1.9 miles (3058m)
		Tesco	Tesco , County Lane , Warfield RG42 3JP	1.3 miles (2092m)
	Post Office	Cost Cutter	Royal Hunt Parade , North Ascot SL5 8JR	2 miles (3219m)
		Londis	New Road , North Ascot SL5 8QH	1.9 miles (3058m)
Chavey Down	Pharmacy	Bullbrook Pharmacy	Bullbrook , Bracknell RG12 2NL	1.7 miles (2736m)
		Tesco	Whitton Road , Martins Heron RG12 9TZ	1.2 miles (1931m)
		David Pharmacy	New Road, North Ascot SL5 8QQ	2.2 miles (3541m)
	Newsagent /General Store	Cost Cutter	Royal Hunt Parade , North Ascot SL5 8JR	1.8 miles (2897m) /1mile walk
		Tesco	County Lane , Warfield RG42 3JP	1.5 miles (2414m)
		Tesco	Whitton Road , Martins Heron RG12 9TZ	1.2 miles (1931m)
	Post Office	Cost Cutter	Royal Hunt Parade , North Ascot SL5 8JR	1.8 miles (2897m)
Cranbourne	Pharmacy	David Pharmacy	New Road , North Ascot SL5 8QQ	1.2 miles (1931m)
	Newsagent / General Store	Tesco	County Lane , Warfield RG42 3JP	3.7 miles (5955m)
		Londis	New Road , Ascot SL5 8QH	1.5 miles (2414m)
		Cranbourne Stores	Squirrel Lane, Winkfield SL4 4TP	0.8 miles (1287m)
	Post Office	Tesco	County Lane , Warfield RG42 3JP	3.7 miles (5955m)
Forest Park	Pharmacy	Sainsburys	Bagshot Road, Bracknell RG12 7SS	1.6 miles (2575m)
	Newsagent / General Store	Tesco	Horndean Road, Forest Park RG12 0XQ	within
		Londis	Crown Row , Crown Wood RG12 0TH	0.5 miles (805m)
		Martins	Crown Row, Crown Wood RG12 0TE	0.5 miles (805m)
	Post Office	Martins	Crown Row, Crown Wood RG12 0TE	0.5miles (805m)
Maidens Green	Pharmacy	David Pharmacy	New Road , North Ascot SL5 8QQ	2.8 miles (4506m)

Maidens Green contd	Newsagent / General Store	Tesco	County Lane , Warfield RG42 3JP	2.1 miles (3380m)
		Cranbourne Hall Park Store	Cranbourne Hall Park SL4 4UG	2.5 miles (4023m)
	Post Office	Tesco	County Lane , Warfield RG42 3JP	2.1 miles (3380m)
		Londis	New Road , North Ascot SL5 8QH	3.1 miles (4989m)
Martins Heron & The Warren	Pharmacy	Londis	New Road , North Ascot SL5 8QH	3.1 miles (4989m)
		Sunninghill	Kings Road , Sunninghill SL5 9AA	5.3 miles (8530m)
	Pharmacy	Boots	Harmans Water, Bracknell RG12 9LP	1.7 miles (2736)
	Newsagent	Sainsburys	Bagshot Road, Bracknell RG12 7SS	2.1 miles (3380m)
North Ascot	Post Office	Tesco	Whitton Road , Martins Heron RG12 9TZ	within
	Pharmacy	Martin Newsagent	Harmans Water, Bracknell RG12 9LP	1.7 miles (2736)
		David Pharmacy	New Road , North Ascot SL5 8QQ	within
	Newsagent / General Store	The Late Shop	Warren Row , North Ascot SL5 8HN	within
Winkfield	Pharmacy	Cost Cutter	Royal Hunt Parade , North Ascot SL5 8JR	within
		Londis	New Road , North Ascot SL5 8QH	within
	Newsagent / General Store	Cost Cutter	Royal Hunt Parade , North Ascot SL5 8JR	within
		Londis	New Road , North Ascot SL5 8QH	within
Kings Ride	Pharmacy	Tesco	County Lane , Warfield RG42 3JP	2.4 miles (3862m)
	Newsagent / General Store	David Pharmacy	New Road, North Ascot SL5 8QQ	1.8 miles (2897m)
		Londis	New Road , Ascot SL5 8QH	2.2 miles (3541m)
	Post Office	Cranbourne Stores	Squirrel Lane, Winkfield, SL4 4TP	1.9miles (3058m)
	Pharmacy	Tesco	County Lane , Warfield RG42 3JP	2.4 miles (3862m)
		Londis	New Road , Ascot SL5 8QH	2.2 miles (3541m)
	Newsagent / General Store	Boots	Ascot High Street SL5 7HG	1.8 miles (2897m)
		Sainsburys	Bagshot Road, Bracknell RG12 7SS	4.0 miles (6437m)
	Pharmacy	Budgens	Ascot High Street SL5 7HD	1.4 miles (2253m )
		WH Smith	Ascot High Street SL5 7HG	1.8 miles (2897m)
	Post Office	Sunninghill	Kings Road , Sunninghill SL5 9AA	2.7 miles (4345m )
		Budgens	Ascot High Street SL5 7HD	1.4 miles (2253m )